

## Product datasheet for **AM10229PU-N**

### beta III Tubulin (TUBB3) (tubulin beta-3 chain) Mouse Monoclonal Antibody [Clone ID: 3D9]

#### Product data:

Product Type:	Primary Antibodies
Clone Name:	3D9
Applications:	ELISA, IHC, IP, WB
Recommended Dilution:	<b>ELISA:</b> <b>Western Blot:</b> 1/500-1/1000. <b>Immunoprecipitation:</b> 1/50-1/200. <b>Immunohistochemistry:</b> 1/100-1/500.
Reactivity:	Human, Mouse, Rat
Host:	Mouse
Isotype:	IgG1
Clonality:	Monoclonal
Immunogen:	beta-Tubulin protein.
Specificity:	Reacts with Human 55 kDa TUBB3 protein. Cross reacts with Mouse, Rat and other species.
Formulation:	PBS State: Purified State: Lyophilized purified antibody Preservative: None
Reconstitution Method:	Restore in distilled water
Concentration:	lot specific
Purification:	Affinity Chromatography on Protein A
Conjugation:	Unconjugated
Storage:	Store lyophilized at 2-8°C for 6 months or at -20°C long term. After reconstitution store the antibody undiluted at 2-8°C for one month or (in aliquots) at -20°C long term. Avoid repeated freezing and thawing.
Stability:	Shelf life: one year from despatch.
Gene Name:	tubulin beta 3 class III



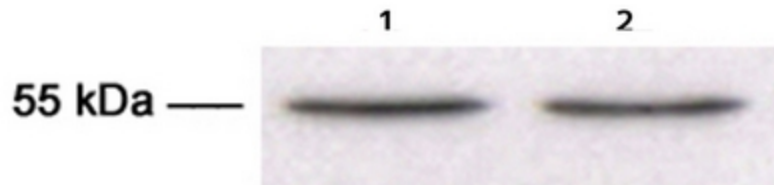
[View online »](#)

Database Link: [Entrez Gene 10381 Human Q13509](#)

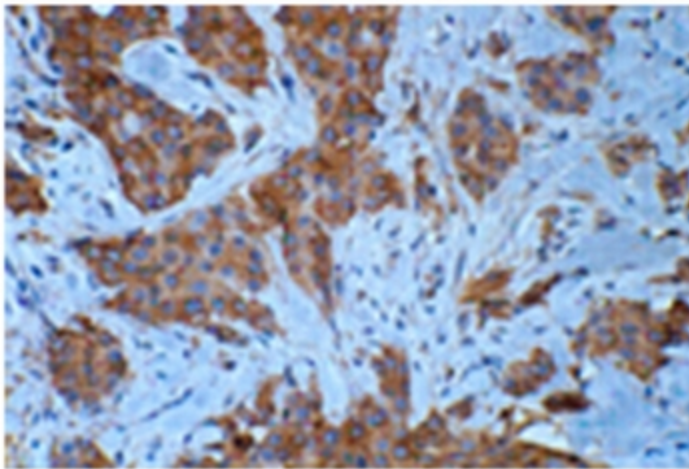
**Background:** Tubulin is the major constituent of microtubules. It binds two moles of GTP, one at an exchangeable site on the beta chain and one at a non exchangeable site on the alpha-chain. Tubulin is a highly conserved protein with a molecular weight of ~50 kD. Microtubules play key roles in chromosome segregation in mitosis, intracellular transport, ciliary and flagellar bending, and structural support of the cytoskeleton. The two main tubulin isoforms,  $\alpha$ - and  $\beta$ -tubulin, are usually products of separate genes. The  $\beta$ -tubulin family includes six expressed genes that produce the polypeptide isoforms known as Classes I through VI, each of which have a distinct pattern of expression. Class III  $\beta$ -tubulin is found in neurons and mammalian testis cells and is widely used as a neuronal marker in developmental neurobiology, neoplasia, and stem cell research. Class III  $\beta$ -tubulin expression in neuronal and neuroblastic tumors is differentiation dependent, and its expression in certain non-neuronal neoplasms has been associated with poor prognosis and/or resistance to chemotherapy.

**Synonyms:** Tubulin beta-3 chain, Tubulin beta-III, Tubulin beta-4

**Product images:**



Western Blot using Tubulin beta-3 antibody : Lane 1: 100 ug MDA cell extract. Lane 2: 50 ug MDA cell extract.



Breast cancer stained in Immunohistochemistry with Tubulin beta-3 antibody