

Product datasheet for **AM10220PU-N**

SYBL1 (VAMP7) Mouse Monoclonal Antibody [Clone ID: 158.2]

Product data:

Product Type:	Primary Antibodies
Clone Name:	158.2
Applications:	ELISA, FC, IF, IHC, WB
Recommended Dilution:	ELISA. Western Blot: 1/500-1/2000. Immunofluorescence. Immunohistochemistry: 1/10-1/400.
Reactivity:	Human
Host:	Mouse
Isotype:	IgG1
Clonality:	Monoclonal
Immunogen:	GST-TI-VAMP recombinant protein
Specificity:	Reacts with Human 25 kDa TI-VAMP protein. Cross reacts with TI-VAMP from different species (Mouse, Rat, Canine).
Formulation:	0.1M Tris, 0.1M Glycine, 2% Sucrose State: Purified State: Lyophilized purified powder Preservative: None
Reconstitution Method:	Restore in distilled water.
Concentration:	1.0 mg/ml after reconstitution
Purification:	Affinity Chromatography on Protein A
Conjugation:	Unconjugated
Storage:	Store lyophilized at 2-8°C for 6 months or at -20°C long term. After reconstitution store the antibody undiluted at 2-8°C for one month or (in aliquots) at -20°C long term. Avoid repeated freezing and thawing.
Stability:	Shelf life: one year from despatch.
Gene Name:	vesicle associated membrane protein 7



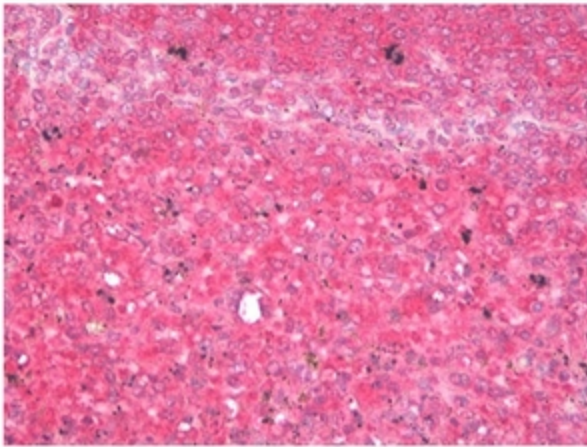
[View online »](#)

Database Link: [Entrez Gene 6845 Human P51809](#)

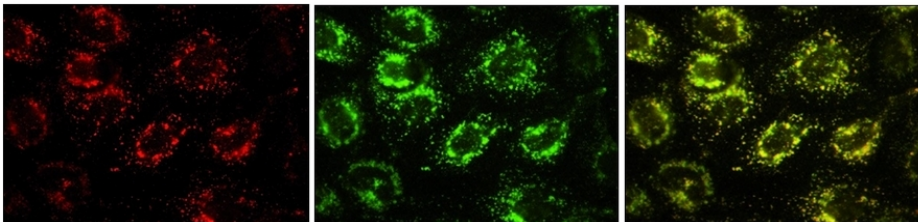
Background: SYBL1 (Synaptobrevin-like 1) is found ubiquitously and is an unusual v-SNAREs molecule implicated in cellular exocytosis. The SYBL1 gene is found on the pseudoautosomal region (PAR) of X chromosome. It is a highly conserved gene and has been shown to be silenced on inactive X and Y chromosomes. In ICF syndrome, a human disease affecting DNA methylation, SYBL1 escapes from silencing and this correlates with the observed altered patterns of histone methylation and acetylation found. An association between some SYBL1 alleles and bipolar affective disorder (BPAD) has been observed.

Synonyms: VAMP7, Ti-VAMP, Vesicle-associated membrane protein 7

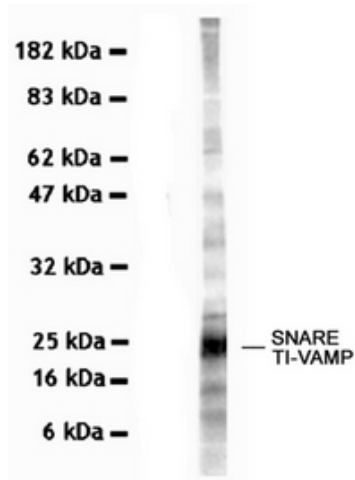
Product images:



Immunohistochemical staining of Spleen Paraffin Sections using Ti-VAMP antibody



Immunofluorescence using Ti-VAMP antibody



Detection of SNARE TI-VAMP protein (52 kDa) using TI-VAMP antibody at 1/500 dilution in extract from Rat brain.