

Product datasheet for **AM10205PU-S**

N epsilon-(gamma-L-glutamyl)-L-lysine isopeptide Mouse Monoclonal Antibody [Clone ID: 81D4]

Product data:

Product Type:	Primary Antibodies
Clone Name:	81D4
Applications:	ELISA, IF, IHC
Recommended Dilution:	ELISA. Immunofluorescence. Immunohistochemistry: 1/50-1/800.
Reactivity:	All Species
Host:	Mouse
Isotype:	IgM
Clonality:	Monoclonal
Immunogen:	Ne-(g-L-glutamyl)-L-lysine isopeptide
Specificity:	Reacts with Ne (g-L-glutamyl)-L-lysine. Cross reacts in ELISA with N1,N4 bis (gPoly L-glutamyl) Putrescine and N1,N8 bis (gPoly L-glutamyl) Spermidine. There is no cross reaction with: Protein bound Ne acetyl lysine, protein bound N1 or N4 mono (gPoly L-glutamyl) Putrescine, protein bound N1 mono (gPoly L-glutamyl) Spermidine, protein bound Ne (g-L-glutamyl) lysine having a free alpha amine either on its glutamyl or lysyl moieties. The ability of this antibody to fix complement is unknown.
Formulation:	20mM PO ₄ , 1M NaCl, 2% Sucrose State: Purified State: Lyophilized purified powder Preservative: None
Reconstitution Method:	Restore in distilled water.
Concentration:	1.0 mg/ml (after reconstitution)
Conjugation:	Unconjugated

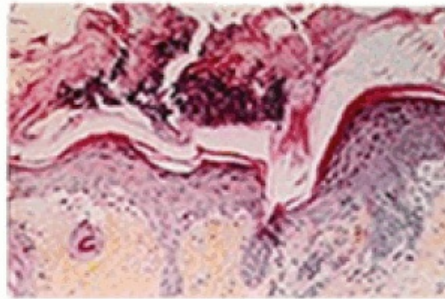
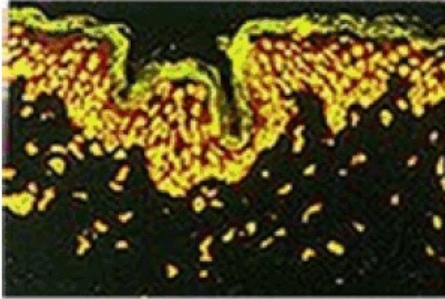


[View online »](#)

Storage: Store lyophilized at 2-8°C for 6 months or at -20°C long term.
After reconstitution store the antibody undiluted at 2-8°C for one month
or (in aliquots) at -20°C long term.
Avoid repeated freezing and thawing.

Stability: Shelf life: one year from despatch.

Product images:



Immunohistochemistry (Formalin/PFA-fixed paraffin-embedded sections) - N epsilon gamma glutamyl Lysine antibody: Localization on N epsilon gamma glutamyl Lysine bounds on sections of skin.