

## Product datasheet for **AM10201PU-N**

### Myoferlin (MYOF) Mouse Monoclonal Antibody [Clone ID: 7D2]

#### Product data:

Product Type:	Primary Antibodies
Clone Name:	7D2
Applications:	ELISA, IHC, WB
Recommended Dilution:	<b>ELISA.</b> <b>Western Blot:</b> 1/50-1/5000. <b>Immunohistochemistry:</b> 1/20-1/1000.
Reactivity:	Human, Mouse
Host:	Mouse
Isotype:	IgG2a
Clonality:	Monoclonal
Immunogen:	Synthetic peptide derived from N-term domain of the Human FER1L3 protein.
Specificity:	This antibody reacts with Human 234 kDa FER1L3 protein. Cross reacts with Mouse protein.
Formulation:	0.1M Tris, 0.1M Glycine, 2% Sucrose State: Purified State: Lyophilized purified antibody Preservative: None
Reconstitution Method:	Restore in distilled water
Concentration:	lot specific
Purification:	Affinity Chromatography on Protein A
Conjugation:	Unconjugated
Storage:	Store lyophilized at 2-8°C for 6 months or at -20°C long term. After reconstitution store the antibody undiluted at 2-8°C for one month or (in aliquots) at -20°C long term. Avoid repeated freezing and thawing.
Stability:	Shelf life: one year from despatch.
Gene Name:	myoferlin



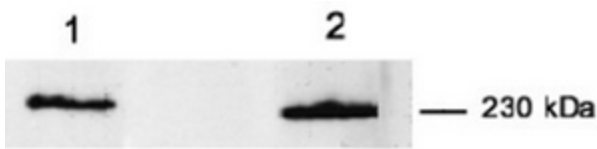
[View online »](#)

Database Link: [Entrez Gene 26509 Human Q9NZM1](#)

**Background:** Myoferlin belongs to the ferlin family and contains five C2 domains. It is a calcium/phospholipid binding protein that plays a role in the plasmalemma repair mechanism of endothelial cells that permits rapid resealing of membranes disrupted by mechanical stress. It is also involved in endocytic recycling and implicated in VEGF signal transduction by regulating the levels of the receptor KDR. Myoferlin is expressed in myoblast and endothelial cells (at protein level), highly expressed in cardiac and skeletal muscles, also present in lung and at very low levels in kidney, placenta and brain. There are eight named isoforms.

**Synonyms:** MYOF, FER1L3, KIAA1207

**Product images:**



Detection of Myoferlin in different cells using Myoferlin antibody Cat.-No AM10201PU-N. Lane 1: C2C12 cell lysate. Lane 2: Fibroblast cell lysate.