

## Product datasheet for **AM10179PU-N**

### Histone H3 (Citrulline Arg2, 8, 17) Mouse Monoclonal Antibody [Clone ID: 7C10]

#### Product data:

Product Type:	Primary Antibodies
Clone Name:	7C10
Applications:	ELISA, FC, IF, WB
Recommended Dilution:	<b>ELISA:</b> 1/20000-1/100000. <b>Western Blot:</b> 1/2000-1/10001. <b>Immunofluorescence/Immunocytochemistry:</b> 1/100-1/500. <b>Flow Cytometry.</b>
Reactivity:	Human
Host:	Mouse
Isotype:	IgG1
Clonality:	Monoclonal
Immunogen:	Synthetic peptide derived from N-terminal domain of Human Histone H3 containing Citrulline at position 2-8-17
Specificity:	This Monoclonal antibody reacts with Human Histone H3 Citrulline at the 3 positions: 2, 8 and 17. It reacts with <i>mono</i> or <i>bis</i> H3-Cit. May cross reacts with other species due to sequence homology.
Formulation:	0.1M Tris, 0.1M Glycine and 2% Sucrose State: Purified State: Lyophilized purified IgG fraction Preservative: None
Reconstitution Method:	Restore in distilled water.
Concentration:	lot specific
Purification:	Protein A Chromatography
Conjugation:	Unconjugated
Storage:	Store lyophilized at 2-8°C for 6 months or at -20°C long term. After reconstitution store the antibody undiluted at 2-8°C for one month or (in aliquots) at -20°C long term. Avoid repeated freezing and thawing.

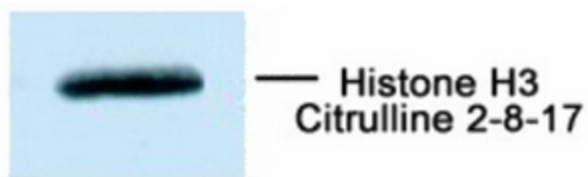


[View online »](#)

**Stability:** Shelf life: one year from despatch.

**Synonyms:** H3 Histone family, HIST1H3

**Product images:**



Immunodetection of Human Histone H3 /  
Citrulline 2-8-17 using AM10179PU-N at 1/100000  
dilution