

Product datasheet for **AM10162PU-N**

CRLF2 Mouse Monoclonal Antibody [Clone ID: 8H8]

Product data:

Product Type:	Primary Antibodies
Clone Name:	8H8
Applications:	ELISA, IHC, WB
Recommended Dilution:	ELISA: 1/20000-1/100000. Western Blot: 1/2000-1/10000. Immunohistochemistry on Paraffin Sections: 10 µg/ml after heat induced antigen retrieval.
Reactivity:	Human
Host:	Mouse
Isotype:	IgG1
Clonality:	Monoclonal
Immunogen:	Recombinant Human TSLP R /Fc chimera
Specificity:	Reacts with Human 42 kDa TSLP Receptor
Formulation:	PBS State: Purified State: Lyophilized powder Preservative: None
Reconstitution Method:	Restore in distilled water.
Concentration:	lot specific
Purification:	Protein A Chromatography
Conjugation:	Unconjugated
Storage:	Store lyophilized at 2-8°C for 6 months or at -20°C long term. After reconstitution store the antibody undiluted at 2-8°C for one month or (in aliquots) at -20°C long term. Avoid repeated freezing and thawing.
Stability:	Shelf life: one year from despatch.
Gene Name:	cytokine receptor-like factor 2



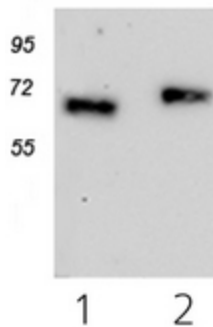
[View online »](#)

Database Link: [Entrez Gene 64109 Human Q9HC73](#)

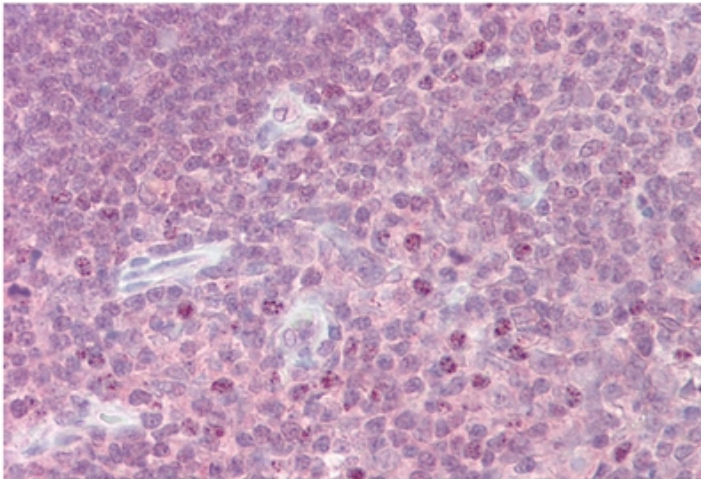
Background: TSLPR is a 42 kDa glycoprotein belonging to the type 1 cytokine receptor family. TSLPR is primarily expressed by dendritic cells and monocytes, and weakly expressed by T-cells. It is also expressed by non-haematopoietic tissues such as the heart, skeletal muscle, kidney and liver. The TSLP receptor forms functional complexes with thymic stromal lymphopoietin (TSLP) and IL-7R, which are capable of stimulating cell proliferation through activation of Stat3 and Stat5.

Synonyms: Cytokine receptor-like 2, IL-XR, ILXR, TSLPR

Product images:



Western Blot staining of Recombinant Human TSLP receptor/Fc Chimera using at 0.02 ug/ml (Lane 1) and 0.2 ug/ml (Lane 2).



Thymus stained with TSLP receptor antibody in Immunohistochemistry on Paraffin Sections