

## Product datasheet for **AM10155PU-N**

### ALB Mouse Monoclonal Antibody [Clone ID: 1C12]

#### Product data:

Product Type:	Primary Antibodies
Clone Name:	1C12
Applications:	ELISA, WB
Recommended Dilution:	<b>ELISA:</b> 1/20,000-1/100,000. <b>Wester Blot:</b> 1/2,000-1/10,000.
Reactivity:	Bovine
Host:	Mouse
Isotype:	IgG1
Clonality:	Monoclonal
Immunogen:	Bovine Serum Albumin
Specificity:	Reacts with BSA. No cross reaction with Human Serum Albumin or Abumin from other species.
Formulation:	0.1M Tris, 0.1M Glycine, 2% Sucrose State: Purified State: Lyophilized powder Preservative: None
Reconstitution Method:	Restore in distilled water.
Concentration:	lot specific
Purification:	Protein A Chromatography
Conjugation:	Unconjugated
Storage:	Store lyophilized at 2-8°C for 6 months or at -20°C long term. After reconstitution store the antibody undiluted at 2-8°C for one month or (in aliquots) at -20°C long term. Avoid repeated freezing and thawing.
Stability:	Shelf life: one year from despatch.
Database Link:	<a href="#">NP_851335</a> <a href="#">Entrez Gene 280717 Bovine P02769</a>



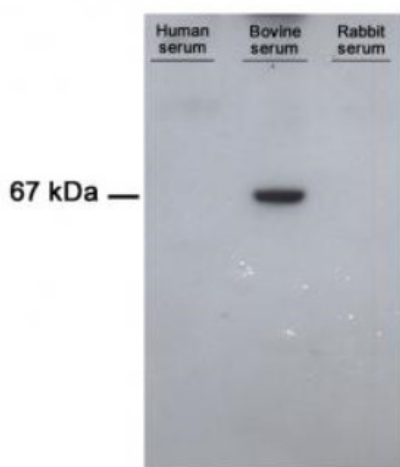
[View online »](#)

**Background:**

Albumin is a soluble, monomeric protein which comprises about one half of the blood serum protein. Albumin functions primarily as a carrier protein for steroids, fatty acids, and thyroid hormones and plays a role in stabilizing extracellular fluid volume. Mutations in this gene on chromosome 4 result in various anomalous proteins. Albumin is a globular unglycosylated serum protein of molecular weight 65,000. The human albumin gene is 16,961 nucleotides long from the putative 'cap' site to the first poly(A) addition site. It is split into 15 exons which are symmetrically placed within the 3 domains that are thought to have arisen by triplication of a single primordial domain. Albumin is synthesized in the liver as preproalbumin which has an N terminal peptide that is removed before the nascent protein is released from the rough endoplasmic reticulum. The product, proalbumin, is in turn cleaved in the Golgi vesicles to produce the secreted albumin.

**Synonyms:**

ALB, BSA, HSA, Serum Albumin

**Product images:**

Comparison of Immunoreactivity of AM10155PU-N with different serums from Human, Bovine and Rabbit.  
-Non-denaturing SDS-PAGE (7.5%).  
-10  $\mu$ l of Serum (1/10) were loaded per lane.