

Product datasheet for **AM10146SU-N**

TPSAB1 Mouse Monoclonal Antibody [Clone ID: G3]

Product data:

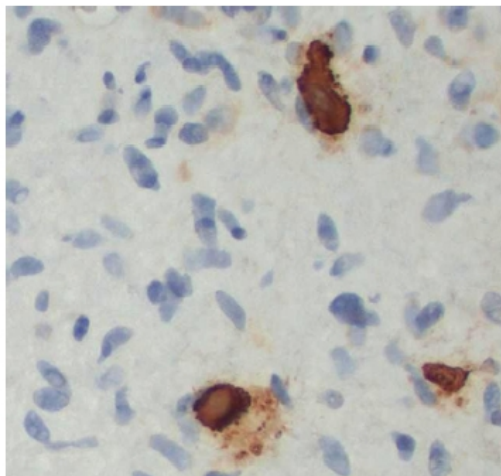
Product Type:	Primary Antibodies
Clone Name:	G3
Applications:	IHC
Recommended Dilution:	Immunohistochemistry on Formalin-Fixed, Paraffin-Embedded Sections: 1/50-1/200 Pretreatment of deparaffinized tissue with heat-induced epitope retrieval is recommended. Use Polymer anti Mouse/Rabbit IgG as a detection system. <i>Positive Control:</i> Mast cells containing tissue or tumors.
Reactivity:	Human
Host:	Mouse
Isotype:	IgG1
Clonality:	Monoclonal
Immunogen:	Purified Human Tryptase protein.
Specificity:	This antibody recognizes Tryptase. Cellular Localization: Cytoplasmic.
Formulation:	State: Supernatant State: Liquid Tissue Culture Supernatant with 0.2% BSA and 15mM Sodium Azide.
Conjugation:	Unconjugated
Storage:	Store the antibody undiluted at 2-8°C.
Stability:	Shelf life: one year from despatch.
Gene Name:	tryptase alpha/beta 1
Database Link:	Entrez Gene 5395 Human Entrez Gene 7177 Human Q15661
Background:	Tryptases constitute a subfamily of trypsin-like proteinases, stored in the mast cell secretory granules and basophils. Upon cellular activation, these enzymes are released into the extracellular environment. Anti-tryptase is a good marker for mast cells, basophils, and their derivatives.
Synonyms:	TPSB1, Tryptase I, Mast Cell Tryptase
Protein Families:	Druggable Genome



[View online »](#)

Protein Pathways: Mismatch repair

Product images:



Formalin-Fixed, Paraffin-Embedded Human neurofibroma stained with Tryptase antibody Cat.-No. AM10146SU-N using peroxidase conjugate and DAB chromogen. Note the cytoplasmic staining of mast cells.