

## Product datasheet for **AM10131SU-N**

### **PAX8 Rabbit Monoclonal Antibody [Clone ID: ZR-1]**

#### **Product data:**

Product Type:	Primary Antibodies
Clone Name:	ZR-1
Applications:	IHC
Recommended Dilution:	<b>Immunohistochemistry on Formalin-Fixed, Paraffin-Embedded Sections:</b> 1/50-1/100 Pretreatment of deparaffinized tissue with heat-induced epitope retrieval (EDTA, pH 9.0) is recommended. Use Polymer anti Mouse/Rabbit IgG as a detection system. <b>Positive Control:</b> Ovarian serous carcinoma.
Reactivity:	Human
Host:	Rabbit
Isotype:	IgG
Clonality:	Monoclonal
Immunogen:	Synthetic peptide corresponding to the C-terminus of Human PAX8 protein.
Specificity:	Recognizes Pax8. <b>Cellular Localization:</b> Nuclear.
Formulation:	State: Supernatant State: Liquid Tissue Culture Supernatant Stabilizer: 0.2% BSA Preservative: 15mM Sodium Azide
Conjugation:	Unconjugated
Storage:	Store the antibody undiluted at 2-8°C.
Stability:	Shelf life: one year from despatch.
Gene Name:	paired box 8
Database Link:	<a href="#">Entrez Gene 4747 Human</a> <a href="#">Entrez Gene 7849 Human</a> <a href="#">Q06710</a>



[View online »](#)

**Background:**

PAX-8 is expressed in the thyroid (and associated carcinomas), non-ciliated mucosal cells of the fallopian tubes and simple ovarian inclusion cysts, but not normal ovarian surface epithelial cells. PAX-8 is expressed in a high percentage of ovarian serous, endometrioid, and clear cell carcinomas, but only rarely in primary ovarian mucinous adenocarcinomas. Studies have also found PAX-8 expression in renal tubules as well as renal carcinoma, nephroblastoma and seminoma. Over 98% of clear cell RCCs, 90% of papillary RCCs, and 95% of oncocytomas were positive for PAX-8, frequencies which are similar or better than for PAX-2. Normal lung and lung carcinomas do not express PAX-8. Similarly, the absence of expression of PAX-8 in breast and other non-GYN carcinomas other than those primary to the thyroid indicates that PAX-8 is an important new marker of ovarian cancer and a useful marker for the differential diagnoses in lung and neck tumors, or tumors at distant sites where primary lung carcinoma or thyroid carcinoma are possibilities. PAX-8, combined with organ system-specific markers such as uroplakin, mammaglobin, and TTF-1 can be a very useful panel to determine the primary site of invasive micropapillary carcinomas of ovary from bladder, lung, and breast.

**Synonyms:**

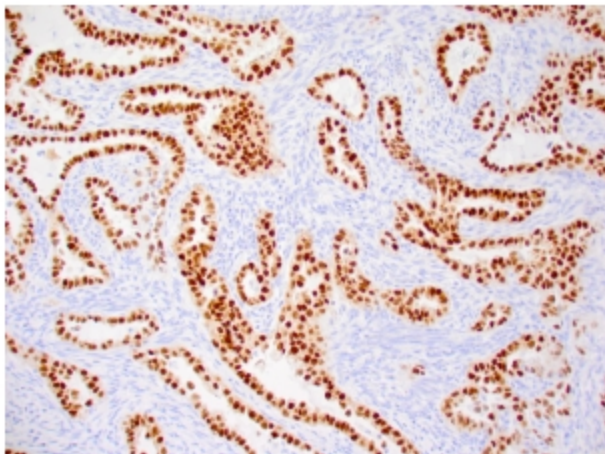
Pax-8

**Protein Families:**

Druggable Genome, ES Cell Differentiation/IPS

**Protein Pathways:**

Amyotrophic lateral sclerosis (ALS)

**Product images:**


Formalin-Fixed, Paraffin-Embedded endometrial clear cell carcinoma stained with PAX8 antibody Cat.-No. AM10131SU-N using peroxidase conjugate and DAB chromogen. Note nuclear staining of tumor cells.