

Product datasheet for **AM10123SU-N**

p75 NGF Receptor (NGFR) Mouse Monoclonal Antibody [Clone ID: MRQ-21]

Product data:

Product Type:	Primary Antibodies
Clone Name:	MRQ-21
Applications:	IHC
Recommended Dilution:	Immunohistochemistry on Formalin-Fixed, Paraffin-Embedded Sections: 1/50-1/200 Pretreatment of deparaffinized tissue with heat-induced epitope retrieval is recommended. Use Polymer anti Mouse/Rabbit IgG as a detection system. <i>Positive Control:</i> Breast tissue.
Reactivity:	Human
Host:	Mouse
Isotype:	IgG1
Clonality:	Monoclonal
Immunogen:	Purified Human NGFR protein.
Specificity:	Recognizes CD271 / NGFR. Cellular Localization: Cytoplasmic.
Formulation:	State: Supernatant State: Liquid Tissue Culture Supernatant with 0.2% BSA and 15mM Sodium Azide.
Conjugation:	Unconjugated
Storage:	Store the antibody undiluted at 2-8°C.
Stability:	Shelf life: one year from despatch.
Gene Name:	nerve growth factor receptor
Database Link:	Entrez Gene 4747 Human Entrez Gene 4804 Human P08138



[View online »](#)

Background:

NGFR, a 75 kd glycoprotein (also known as P-75NTR), is the first of neurotrophin receptors to be isolated and is a member of the tumor necrosis factor (TNF) receptor family. It is expressed not only in sympathetic and sensory neurons, but also in various neural crest cell or tumor derivatives such as melanocytes, melanomas, neuroblastomas, pheochromocytomas, neurofibromas, and neurotized nevi (type C melanocytes). NGFR has been shown to be a reliable marker for desmoplastic and neurotropic melanoma by several groups. It is now apparent that expression of NGFR is ubiquitous and not limited to the nervous system, being expressed in mature nonneural cells such as perivascular cells, follicular dendritic cells, basal epithelium of oral mucosa and hair follicles, prostate basal cells and myoepithelial cells. Studies in prostate and urothelial cancer suggest that NGFR may act as a tumour suppressor, negatively regulating cell growth and proliferation. Anti-NGFR labels the myoepithelial cells of breast ducts and intralobular fibroblasts of breast ducts and thus aids in the diagnosis of malignancy in the breast.

Synonyms:

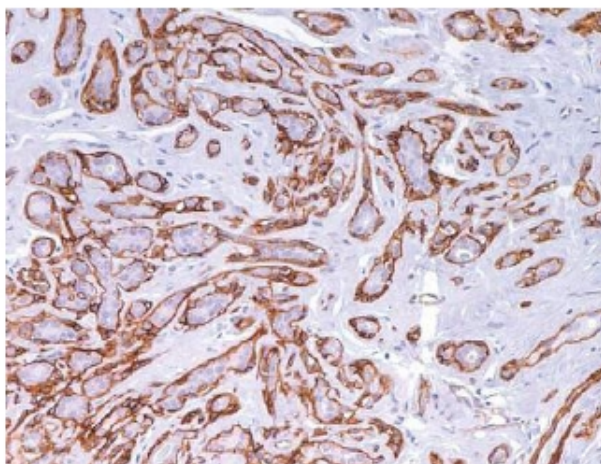
TNFRSF16

Protein Families:

Druggable Genome, ES Cell Differentiation/IPS

Protein Pathways:

Amyotrophic lateral sclerosis (ALS)

Product images:

Formalin-Fixed, Paraffin-Embedded Human breast sclerosing adenosis stained with NGFR antibody Cat.-No. AM10123SU-N using peroxidase conjugate and DAB chromogen. Note the cytoplasmic staining of myoepithelial cells.