

## Product datasheet for **AM10120SU-N**

### Gastric Mucin (MUC6) Mouse Monoclonal Antibody [Clone ID: MRQ-20]

#### Product data:

Product Type:	Primary Antibodies
Clone Name:	MRQ-20
Applications:	IHC
Recommended Dilution:	<b>Immunohistochemistry on Formalin-Fixed, Paraffin-Embedded Sections:</b> 1/50-1/200 Pretreatment of deparaffinized tissue with heat-induced epitope retrieval is recommended. Use Polymer anti Mouse/Rabbit IgG as a detection system. <i>Positive Control:</i> Stomach.
Reactivity:	Human
Host:	Mouse
Isotype:	IgG1
Clonality:	Monoclonal
Immunogen:	Recombinant Human MUC56 protein.
Specificity:	Recognizes Mucin-6. Cellular Localization: Cytoplasmic.
Formulation:	State: Supernatant State: Liquid Tissue Culture Supernatant with 0.2% BSA and 15mM Sodium Azide.
Conjugation:	Unconjugated
Storage:	Store the antibody undiluted at 2-8°C.
Stability:	Shelf life: one year from despatch.
Gene Name:	mucin 6, oligomeric mucus/gel-forming
Database Link:	<a href="#">Entrez Gene 4286 Human</a> <a href="#">Entrez Gene 4588 Human</a> <a href="#">Q6W4X9</a>



[View online »](#)

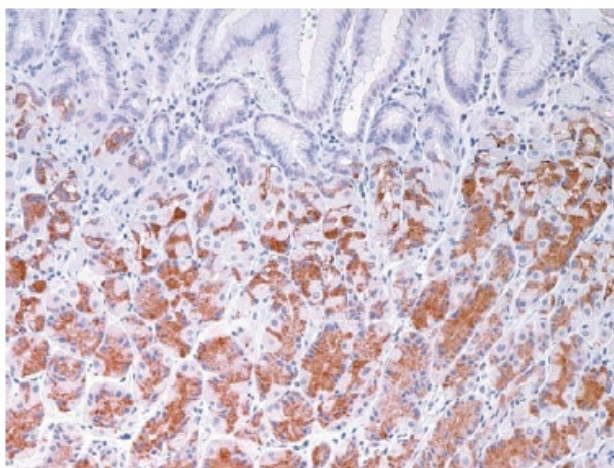
**Background:** Mucin 6 (Muc-6 Glycoprotein). Mucins are heavily glycosylated glycoproteins, which constitute the major components of mucus which cover the surface of epithelial tissues. Nine distinct epithelial mucin genes (Muc-1, 2, 3, 4, 5AC, 5B, 6,7 and 8) have been identified. Various immunohistochemical and in situ hybridization studies have shown that these mucins are differentially expressed in epithelia with cell-type specificity. Muc-5AC and Muc-6 glycoproteins are the first two mucins found in superficial epithelium and Muc-6 glycoprotein is found in the deep glands.

**Synonyms:** MUC-6, Gastric mucin-6, MUC6

**Protein Families:** Druggable Genome, Transcription Factors

**Protein Pathways:** Melanogenesis, Melanoma, Pathways in cancer

### Product images:



Formalin-Fixed, Paraffin-Embedded Human gastric mucosa stained with Mucin-6 antibody Cat.-No. AM10120SU-N using peroxidase conjugate and DAB chromogen. Note the cytoplasmic staining of glandular cells.