

Product datasheet for **AM10117SU-N**

EMA (MUC1) Mouse Monoclonal Antibody [Clone ID: MRQ-17]

Product data:

Product Type:	Primary Antibodies
Clone Name:	MRQ-17
Applications:	IHC
Recommended Dilution:	Immunohistochemistry on Formalin-Fixed, Paraffin-Embedded Sections: 1/50-1/100 Pretreatment of deparaffinized tissue with heat-induced epitope retrieval is recommended. Use Polymer anti Mouse/Rabbit IgG as a detection system. <i>Positive Control:</i> Breast carcinoma.
Reactivity:	Human, Mouse
Host:	Mouse
Isotype:	IgG1
Clonality:	Monoclonal
Immunogen:	A synthetic peptide from cytoplasmic tail of Human MUC-1 protein.
Specificity:	Recognizes CD227 / Mucin-1 / MUC1. Cellular Localization: Cytoplasmic.
Formulation:	State: Supernatant State: Liquid Tissue Culture Supernatant with 0.2% BSA and 15mM Sodium Azide.
Conjugation:	Unconjugated
Storage:	Store the antibody undiluted at 2-8°C.
Stability:	Shelf life: one year from despatch.
Gene Name:	mucin 1, cell surface associated
Database Link:	Entrez Gene 17342 Mouse Entrez Gene 4582 Human P15941
Background:	MUC-1 is a heavily O-glycosylated transmembrane protein expressed on most secretory epithelium, including mammary gland and some hematopoietic cells. It is expressed abundantly in lactating mammary glands and overexpressed abundantly in >90% breast carcinomas and metastases. Transgenic MUC-1 has been shown to associate with all four ceB receptors and localize with erbB1 (EGFR) in lactating glands.
Synonyms:	MUC-1, PEMT, Episialin, EMA, H23AG, PUM, DF3, CA 15-3

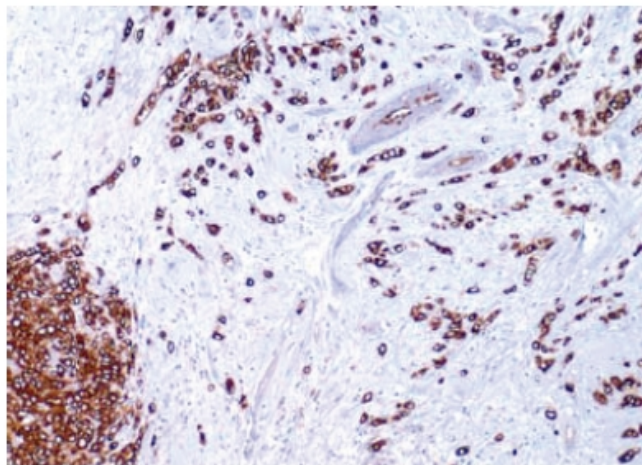


[View online »](#)

Protein Families: Druggable Genome, Transcription Factors

Protein Pathways: Melanogenesis, Melanoma, Pathways in cancer

Product images:



Formalin-Fixed, Paraffin-Embedded Human breast carcinoma stained with MUC1 antibody Cat.-No. AM10117SU-N using peroxidase conjugate and DAB chromogen. Note the cytoplasmic staining of tumor cells.