

Product datasheet for **AM10115SU-N**

MMP9 Rabbit Monoclonal Antibody [Clone ID: EP1255Y]

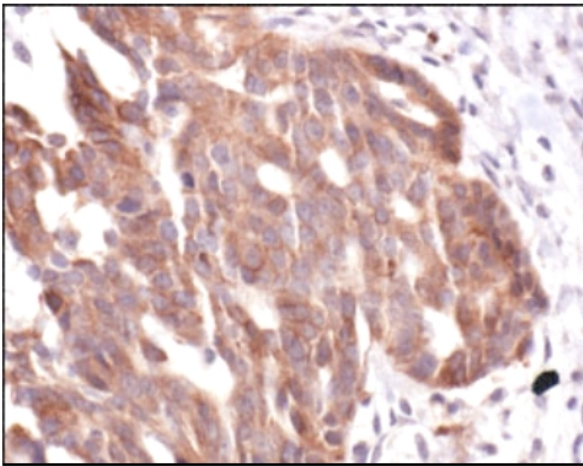
Product data:

Product Type:	Primary Antibodies
Clone Name:	EP1255Y
Applications:	IF, IHC, WB
Recommended Dilution:	Western Blot. Immunocytochemistry. Immunohistochemistry on Formalin-Fixed, Paraffin-Embedded Sections: 1/50-1/100 Pretreatment of deparaffinized tissue with heat-induced epitope retrieval is recommended. Use Polymer anti Mouse/Rabbit IgG as a detection system. <i>Positive Control:</i> Placenta, or breast carcinoma.
Reactivity:	Guinea Pig, Human
Host:	Rabbit
Isotype:	IgG
Clonality:	Monoclonal
Immunogen:	A synthetic peptide corresponding to residues on Human MMP-9
Specificity:	This antibody reacts with both latent and active MMP-9. Cellular Localization: Cytoplasmic.
Formulation:	State: Supernatant State: Liquid Tissue Culture Supernatant with 0.2% BSA and 15mM Sodium Azide.
Purification:	Affinity Chromatography.
Conjugation:	Unconjugated
Storage:	Store the antibody undiluted at 2-8°C.
Stability:	Shelf life: one year from despatch.
Gene Name:	matrix metalloproteinase 9
Database Link:	Entrez Gene 4286 Human Entrez Gene 4318 Human P14780



[View online »](#)

Background:	Metallomatrix proteases (MMPs) are proteolytic enzymes capable of degrading connective tissue components. They have a common mode of activation, a conserved amino acid sequence in the putative metal binding-active site region, and are inhibited by specific tissue inhibitors of metalloproteinases (TIMPs). MMPs and TIMPs play a significant role in regulating angiogenesis.
Synonyms:	Matrix metalloproteinase-9, MMP9, 92 kDa type IV collagenase, 92 kDa gelatinase, GELB, Gelatinase B, CLG4B
Note:	Theoretical Molecular Weight: 92kDa
Protein Families:	Druggable Genome, Transcription Factors
Protein Pathways:	Melanogenesis, Melanoma, Pathways in cancer

Product images:

Formalin-Fixed, Paraffin-Embedded Human ovarian carcinoma stained with MMP9 antibody Cat.-No. AM10115SU-N using peroxidase conjugate and DAB chromogen. Note the cytoplasmic staining of carcinoma cells.