

Product datasheet for **AM10102SU-N**

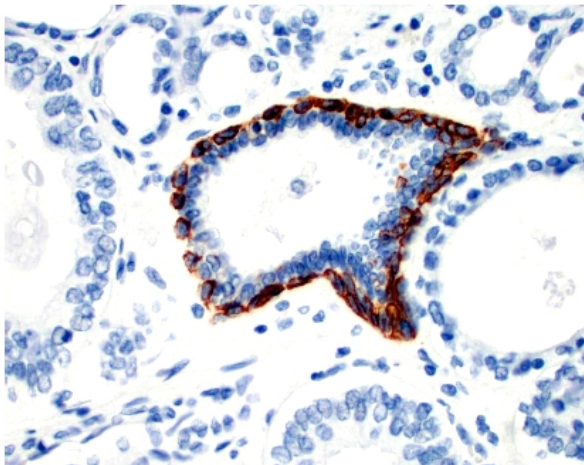
Cytokeratin 5 (KRT5) Mouse Monoclonal Antibody [Clone ID: D5/16 B4]

Product data:

Product Type:	Primary Antibodies
Clone Name:	D5/16 B4
Applications:	IHC
Recommended Dilution:	Immunohistochemistry on Formalin-Fixed, Paraffin-Embedded Sections: 1/50-1/200 Pretreatment of deparaffinized tissue with heat-induced epitope retrieval is recommended. Use Polymer anti Mouse/Rabbit IgG as a detection system. <i>Positive Control:</i> Mesothelioma, prostate.
Reactivity:	Human
Host:	Mouse
Isotype:	IgG1
Clonality:	Monoclonal
Immunogen:	Isolated Cytokeratin-5
Specificity:	Recognizes Cytokeratin 5/6. Cellular Localization: Cytoplasmic.
Formulation:	State: Supernatant State: Liquid Tissue Culture Supernatant with 0.2% BSA and 15mM Sodium Azide.
Conjugation:	Unconjugated
Storage:	Store the antibody undiluted at 2-8°C.
Stability:	Shelf life: one year from despatch.
Gene Name:	keratin 5
Database Link:	Entrez Gene 54474 Human Entrez Gene 3852 Human P13647
Background:	Twenty human keratins are divided into acidic (pI <5.7) and basic (pI >6.0) subfamilies. Members of the acidic and basic subfamilies are found together in pairs. The composition of keratin pairs varies with the epithelial cell type, stage of differentiation, cellular growth environment, and disease state. Many studies have shown the usefulness of keratins as markers in cancer research and tumor identification.
Synonyms:	KRT5, Cytokeratin-5, Keratin-5, Keratin 5, CK5, K5



[View online »](#)

Product images:

Formalin-Fixed, Paraffin-Embedded Human prostate carcinoma stained with Cytokeratin-5/6 antibody Cat.-No. AM10102SU-N using peroxidase conjugate and DAB chromogen. Note the cytoplasmic staining of basal cells of benign but not tumor glands.