

Product datasheet for **AM10098SU-N**

Inhibin alpha (INHA) Mouse Monoclonal Antibody [Clone ID: R1]

Product data:

| | |
|-----------------------|---|
| Product Type: | Primary Antibodies |
| Clone Name: | R1 |
| Applications: | IHC |
| Recommended Dilution: | Immunohistochemistry on Formalin-Fixed, Paraffin-Embedded Sections: 1/10-1/100 Pretreatment of deparaffinized tissue with heat-induced epitope retrieval is recommended. Use Polymer anti Mouse/Rabbit IgG as a detection system. <i>Positive Control:</i> Adrenal cortex, placenta, testis, corpus luteum. |
| Reactivity: | Bovine, Human |
| Host: | Mouse |
| Isotype: | IgG2a |
| Clonality: | Monoclonal |
| Immunogen: | A synthetic peptide corresponding to amino acids 1-32 of Human Inhibin alpha subunit. |
| Specificity: | Recognizes Inhibin alpha. Cellular Localization: Cytoplasmic. |
| Formulation: | State: Supernatant State: Liquid Tissue Culture Supernatant with 0.2% BSA and 15mM Sodium Azide. |
| Concentration: | lot specific |
| Conjugation: | Unconjugated |
| Storage: | Store the antibody undiluted at 2-8°C. |
| Stability: | Shelf life: one year from despatch. |
| Gene Name: | inhibin alpha subunit |
| Database Link: | Entrez Gene 3623 Human P05111 |



[View online »](#)

Background:

Inhibin is a dimeric glycoprotein hormone from TGF-beta family made up of alpha and beta subunits. It inhibits the production of follicle-stimulating hormone from pituitary while actively stimulates the production of FSH. It is suggested that inhibin may act as a gonadal tumor suppressor.

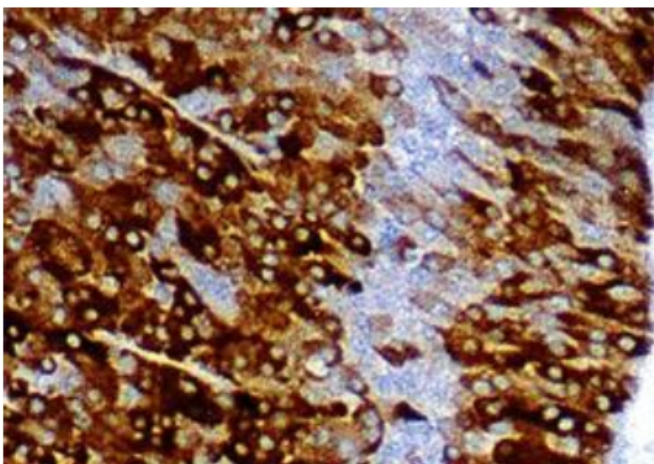
Inhibin has 2 subunits (alpha and beta) that are coded by separate genes. The alpha subunit determines whether inhibin or activin will be produced. The alpha subunit remains constant, such that the various types of inhibin are defined by the beta subunit (a,b,c,d). Inhibin A is a dimer of alpha and beta A. Inhibin B is a dimer of alpha and beta B. Proteolytic processing yields a number of inhibin alpha bioactive forms: the 20/23 kDa forms consist solely of the mature alpha chain, the 26/29 kDa forms consist of the most N terminal propeptide linked through a disulfide bond to the mature alpha chain, and the 50/53 kDa forms encompass the entire proprotein. Each type can be furthermore either mono or diglycosylated, causing the mass difference.

Synonyms:

INHA

Protein Families:

Druggable Genome, Secreted Protein

Product images:

Formalin-Fixed, Paraffin-Embedded Human corpus luteum stained with Inhibin antibody Cat.-No. AM10098SU-N using peroxidase conjugate and DAB chromogen. Note the cytoplasmic staining of luteal cells.