

## Product datasheet for **AM10092SU-N**

### **HBA1 Rabbit Monoclonal Antibody [Clone ID: EPR3608]**

#### **Product data:**

Product Type:	Primary Antibodies
Clone Name:	EPR3608
Applications:	IHC, WB
Recommended Dilution:	<b>Western Blot.</b> <b>Immunohistochemistry on Formalin-Fixed, Paraffin-Embedded Sections:</b> 1/50-1/250. Pretreatment of deparaffinized tissue with heat-induced epitope retrieval is recommended. Use Polymer anti Mouse/Rabbit IgG as a detection system. <b>Positive Control:</b> Bone marrow or spleen.
Reactivity:	Human, Mouse, Rat
Host:	Rabbit
Isotype:	IgG
Clonality:	Monoclonal
Immunogen:	Synthetic peptide corresponding to residues in Human Hemoglobin alpha chain
Specificity:	Recognizes Hemoglobin alpha chain. <b>Cellular Localization:</b> Cytoplasmic.
Formulation:	State: Supernatant State: Tissue Culture Supernatant Stabilizer: 0.2% BSA Preservative: 15mM Sodium Azide
Conjugation:	Unconjugated
Storage:	Store the antibody undiluted at 2-8°C.
Stability:	Shelf life: one year from despatch.
Gene Name:	hemoglobin subunit alpha 1
Database Link:	<a href="#">Entrez Gene 1082 Human</a> <a href="#">Entrez Gene 3039 Human</a> <a href="#">P69905</a>



[View online »](#)

**Background:**

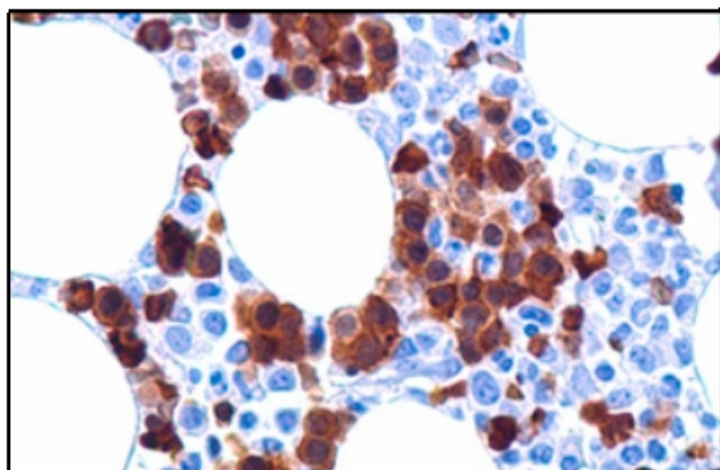
Hemoglobin alpha chain belongs to the globin family and is involved in oxygen transport from the lung to the various peripheral tissues. Hemoglobin A is comprised of two alpha chains and two beta chains, whereas hemoglobin A2 is comprised of two alpha chains and two delta chains. Immunohistochemical localization of hemoglobin is excellent as an erythroid marker for the detection of immature, dysplastic, and megaloblastic erythroid cells in myeloproliferative disorders, such as erythroleukemia. In contrast, myeloid cells, lymphoid cells, plasma cells, histiocytes and megakaryocytes are negative for hemoglobin alpha antibody. Anti-hemoglobin alpha, combined with CD34, CD117, CD68, and MPO can be helpful in distinguishing between reactive extramedullary hematopoiesis and that seen in neoplastic myeloid disorders in spleen. Anti-hemoglobin alpha is limited to expression by erythroid precursors in bone marrow, thus is of assistance in calculating percentages of erythroid precursors.

**Synonyms:**

HBA1, Alpha-globin, Hemoglobin alpha chain

**Protein Families:**

Druggable Genome

**Product images:**


Formalin-Fixed, Paraffin-Embedded Human bone marrow stained with Hemaglobin A antibody Cat.-No. AM10092SU-N using peroxidase conjugate and DAB chromogen. Note the cytoplasmic staining of erythroid precursors.