

## Product datasheet for **AM10091SU-N**

### Glypican 3 (GPC3) Mouse Monoclonal Antibody [Clone ID: 1G12]

#### Product data:

Product Type:	Primary Antibodies
Clone Name:	1G12
Applications:	IHC
Recommended Dilution:	<b>Immunohistochemistry on Formalin-Fixed, Paraffin-Embedded Sections:</b> 1/50-1/150 Pretreatment of deparaffinized tissue with heat-induced epitope retrieval is recommended. Use Polymer anti Mouse/Rabbit IgG as a detection system. <b>Positive Control:</b> Hepatocellular carcinoma.
Reactivity:	Human
Host:	Mouse
Isotype:	IgG1
Clonality:	Monoclonal
Immunogen:	A fragment containing the last 70 amino acids of the core glypican-3.
Specificity:	The 1G12 monoclonal antibody has been used to assess GPC3 expression in malignant and nonmalignant liver tissue samples by Immunohistochemistry in formalin-faxed and paraffin-embedded tissue. <b>Cellular Localization:</b> Cytoplasmic and membrane.
Formulation:	State: Supernatant State: Tissue Culture Supernatant with 0.2% BSA and 15mM Sodium Azide.
Conjugation:	Unconjugated
Storage:	Store the antibody undiluted at 2-8°C.
Stability:	Shelf life: one year from despatch.
Gene Name:	glypican 3
Database Link:	<a href="#">Entrez Gene 3958 Human</a> <a href="#">Entrez Gene 2719 Human</a> <a href="#">P51654</a>



[View online »](#)

**Background:**

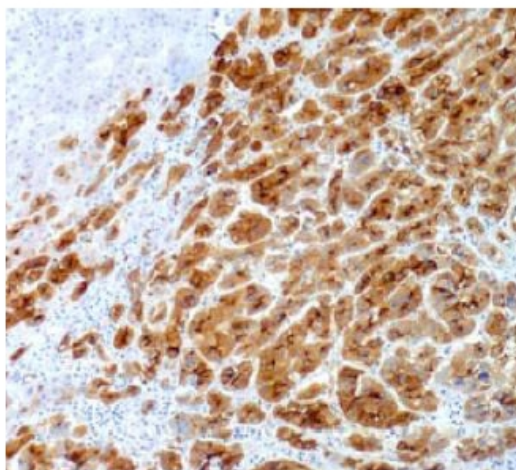
Glypican-3 (GPC3) is a member of the glypican family of glycosyl phosphatidylinositol-anchored cell-surface heparan sulfate proteoglycans. Studies have shown that GPC3 is expressed at the protein level in most hepatocellular carcinomas, but it is undetectable in normal liver and benign hepatic lesions, including dysplastic and cirrhotic nodules. In addition, GPC3 is significantly elevated in the serum of a large proportion of patients with hepatocellular carcinoma. Based on these results, it has been proposed that GPC3 could be a useful marker to differentiate between benign and malignant liver diseases.

**Synonyms:**

Intestinal protein OCI-5, GTR2-2, MXR7, OCI5

**Protein Families:**

Secreted Protein

**Product images:**

Formalin-Fixed, Paraffin-Embedded Human hepatocellular carcinoma stained with Glypican-3 antibody Cat.-No. AM10091SU-N using peroxidase conjugate and DAB chromogen. Note membranous and granular cytoplasmic staining of tumor cells.