

Product datasheet for **AM10085SU-N**

Fascin (FSCN1) Mouse Monoclonal Antibody [Clone ID: 55K-2]

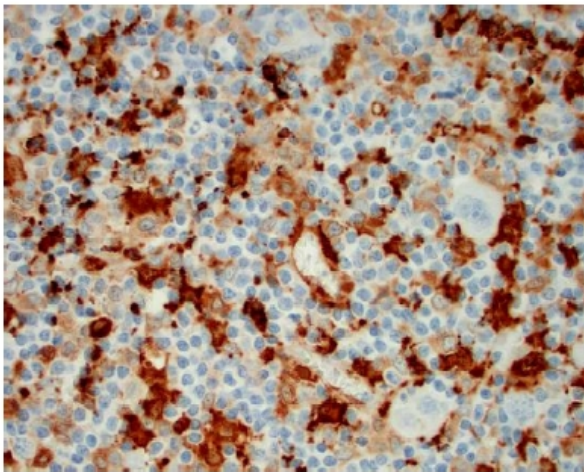
Product data:

Product Type:	Primary Antibodies
Clone Name:	55K-2
Applications:	IHC
Recommended Dilution:	Immunohistochemistry on Formalin-Fixed, Paraffin-Embedded Sections: 1/50-1/250 Pretreatment of deparaffinized tissue with heat-induced epitope retrieval is recommended. Use Polymer anti Mouse/Rabbit IgG as a detection system. <i>Positive Control:</i> Hodgkin's lymphoma or spleen.
Reactivity:	Human, Rat
Host:	Mouse
Isotype:	IgG1
Clonality:	Monoclonal
Immunogen:	Fascin purified from HeLa cells.
Specificity:	Clone 55K-2 can be used as an effective marker for Reed Sternberg cells. Cellular Localization: Cytoplasmic.
Formulation:	State: Supernatant State: Tissue Culture Supernatant with 0.2% BSA and 15mM Sodium Azide.
Conjugation:	Unconjugated
Storage:	Store the antibody undiluted at 2-8°C.
Stability:	Shelf life: one year from despatch.
Gene Name:	fascin actin-bundling protein 1
Database Link:	Entrez Gene 24329 Rat Entrez Gene 6624 Human Q16658
Background:	Human fascin is a highly conserved actin-bundling protein. Fascin, encoded by the human homolog for sn (hsn) gene, has been localized to microspikes and stress fibers of cultured cells where it is thought to be involved in the formation of microfilament bundles. It is expressed predominantly in dendritic cells. Lymphoid cells, myeloid cells and plasma cells are negative. However, Reed Sternberg cells in Hodgkin's lymphoma are positive for fascin staining. Epstein-Barr virus may induce expression of fascin in B cells.



[View online »](#)

- Synonyms:** SCN1, FAN1, HSN, SNL, p55, Singed-like protein, Dendritic cell marker
- Protein Families:** Adult stem cells, Cancer stem cells, Druggable Genome, ES Cell Differentiation/IPS, Protein Kinase, Secreted Protein, Stem cell relevant signaling - JAK/STAT signaling pathway, Transmembrane
- Protein Pathways:** Adherens junction, Bladder cancer, Calcium signaling pathway, Colorectal cancer, Cytokine-cytokine receptor interaction, Dorso-ventral axis formation, Endocytosis, Endometrial cancer, Epithelial cell signaling in Helicobacter pylori infection, ErbB signaling pathway, Focal adhesion, Gap junction, Glioma, GnRH signaling pathway, MAPK signaling pathway, Melanoma, Non-small cell lung cancer, Pancreatic cancer, Pathways in cancer, Prostate cancer, Regulation of actin cytoskeleton

Product images:

Formalin-Fixed, Paraffin-Embedded Human Hodgkin's lymphoma stained with Fascin antibody Cat.-No. AM10085SU-N using peroxidase conjugate and DAB chromogen. Note the cytoplasmic staining of Hodgkin's cells.