

## Product datasheet for **AM10082PU-T**

### EMA (MUC1) Mouse Monoclonal Antibody [Clone ID: E29]

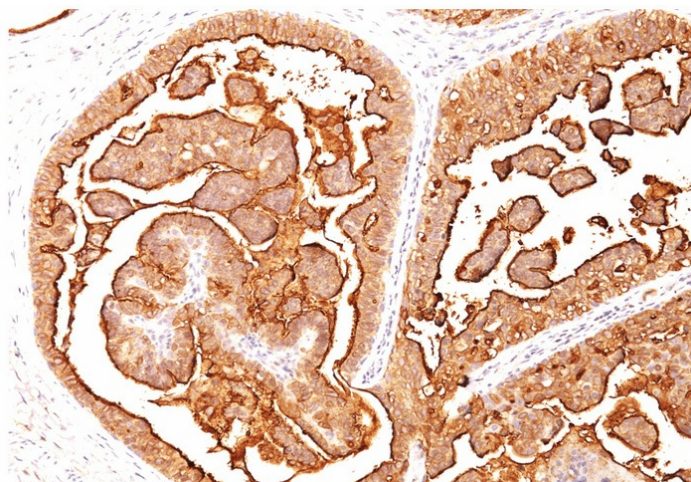
#### Product data:

Product Type:	Primary Antibodies
Clone Name:	E29
Applications:	FC, IF, IHC, IP, WB
Recommended Dilution:	<b>ELISA:</b> Use BSA free Antibody for coating. <b>Flow Cytometry:</b> 0.5-1 µg/million cells. <b>Immunofluorescence:</b> 0.5-1 µg/ml. <b>Western Blotting:</b> 0.5-1 µg/ml. <b>Immunoprecipitation:</b> 0.5-1 µg/500 µg protein lysate. <b>Immunohistochemistry on Frozen and Formalin-fixed Sections:</b> 0.5-1.0 µg/ml for 30 minutes at RT. No special pretreatment is required for staining of formalin/paraffin tissues. <b>Positive Control:</b> Breast or colon carcinoma.
Reactivity:	Human
Host:	Mouse
Isotype:	IgG2a
Clonality:	Monoclonal
Immunogen:	Delipidated extract of human milk fat globule membranes.
Specificity:	In Western blotting, it recognizes proteins in MW range of 265-400kDa, identified as different glycoforms of EMA. This protein is proteolytically cleaved into alpha and beta subunits that form a heterodimeric complex. The N-terminal alpha subunit and the C-terminal beta subunit. The alpha subunit has cell adhesive properties. It can act both as an adhesion and an anti-adhesion protein. EMA may provide a protective layer on epithelial cells against bacterial and enzyme attack. The beta subunit contains a C-terminal domain, which is involved in cell signaling, through phosphorylations and protein-protein interactions. In immunohistochemical assays, it superbly stains routine formalin/paraffin carcinomas. Antibody to EMA is useful as a pan-epithelial marker for detecting early metastatic loci of carcinoma in bone marrow or liver. <b>Cellular Localization:</b> Cytoplasmic & cell surface.



[View online »](#)

<b>Formulation:</b>	10mM PBS State: Purified State: Liquid purified IgG fraction from Bioreactor Concentrate Stabilizer: 0.05% BSA Preservative: 0.05% Sodium Azide
<b>Concentration:</b>	lot specific
<b>Purification:</b>	Protein A/G Chromatography
<b>Conjugation:</b>	Unconjugated
<b>Storage:</b>	Store undiluted at 2-8°C.
<b>Stability:</b>	Shelf life: one year from despatch.
<b>Predicted Protein Size:</b>	265-400 kDa
<b>Gene Name:</b>	mucin 1, cell surface associated
<b>Database Link:</b>	<a href="#">Entrez Gene 4582 Human P15941</a>
<b>Synonyms:</b>	MUC-1, PEMT, Episialin, EMA, H23AG, PUM, DF3, CA 15-3

**Product images:**

Formalin-Paraffin breast carcinoma stained with CD227 / Mucin-1 / MUC1 Antibody (Clone E29).