

## Product datasheet for **AM10073PU-T**

### CD8A (C-term) Mouse Monoclonal Antibody [Clone ID: C8/144B]

#### Product data:

Product Type:	Primary Antibodies
Clone Name:	C8/144B
Applications:	FC, IF, IHC, IP, WB
Recommended Dilution:	<b>ELISA:</b> Use BSA free Antibody for coating. <b>Flow Cytometry:</b> 0.5-1 µg/10 <sup>6</sup> cells. <b>Immunofluorescence:</b> 0.5-1 µg/ml. <b>Western Blot:</b> 0.5-1 µg/ml. <b>Immunoprecipitation:</b> 1-2 µg/500 µg protein lysate. <b>Immunohistochemistry on Frozen Sections:</b> 1-2 µg/ml. <b>Immunohistochemistry on Paraffin Sections:</b> 1-2 µg/ml. <b>Incubation Time:</b> 30 minutes at RT. Staining of formalin-fixed tissues requires boiling tissue sections in 10mM citrate buffer, pH 6.0, for 10-20 min followed by cooling at RT for 20 minutes. <b>Positive Control:</b> HuT78 or hPBL,Tonsil.
Reactivity:	Human
Host:	Mouse
Isotype:	IgG1
Clonality:	Monoclonal
Immunogen:	A 13 amino acid peptide from C-terminal cytoplasmic domain of alpha chain of Human CD8 molecule.
Specificity:	Recognizes Human CD8. Other species not tested. <b>Cellular Localization:</b> Cell surface.
Formulation:	10mM PBS State: Purified State: Liquid purified IgG fraction from Bioreactor Concentrate Stabilizer: 0.05% BSA Preservative: 0.05% Sodium Azide
Concentration:	lot specific
Purification:	Protein A/G Chromatography



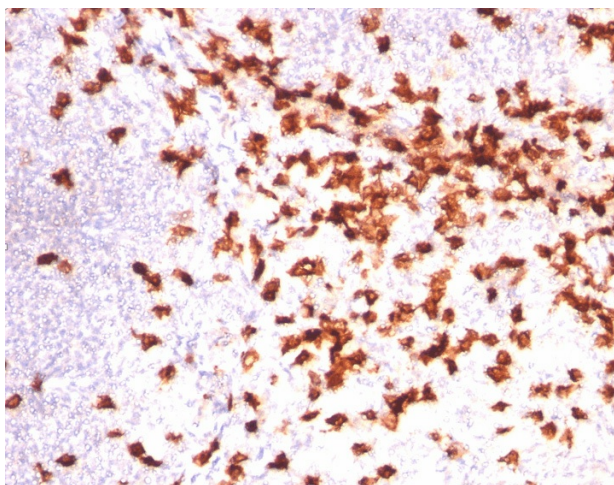
[View online »](#)

Conjugation:	Unconjugated
Storage:	Store undiluted at 2-8°C.
Stability:	Shelf life: one year from despatch.
Predicted Protein Size:	32 kDa
Gene Name:	CD8a molecule
Database Link:	<a href="#">Entrez Gene 925 Human P01732</a>

**Background:** CD8 is a cell surface glycoprotein molecule expressed on the surface of a subset of T cells, generally the cytotoxic/suppressor cells, as well as on some natural killer cells. There are two forms of CD8, either as an alpha-alpha homodimer or alpha-beta heterodimer. The pathological role of CD8 has been observed in familial CD8 deficiency. A majority of thymocytes and a subpopulation of mature T cells and NK cells express CD8a. CD8 binds to MHC class 1 and through its association with protein tyrosine kinase p56lck plays a role in T cell development and activation of mature T cells. For mature T-cells, CD4 and CD8 are mutually exclusive, so anti-CD8, generally used in conjunction with anti-CD4. It is a useful marker for distinguishing helper/inducer T-lymphocytes, and most peripheral T-cell lymphomas are CD4+/CD8-. Anaplastic large cell lymphoma is usually CD4+ and CD8-, and in T-lymphoblastic lymphoma/leukemia, CD4 and CD8 are often co-expressed. CD8 is also found in littoral cell angioma of the spleen.

**Synonyms:** CD8 alpha chain, CD8A, MAL

### Product images:



Formalin-Fixed, Paraffin-Embedded Human tonsil stained with CD8 Antibody (Clone C8/144B). Note Cell surface staining.