

Product datasheet for **AM10067SU-N**

CD45 (PTPRC) (CD45RA) Mouse Monoclonal Antibody [Clone ID: 4KB5]

Product data:

Product Type:	Primary Antibodies
Clone Name:	4KB5
Applications:	IHC
Recommended Dilution:	Immunohistochemistry on Formalin-Fixed, Paraffin-Embedded Sections: 1/50-1/100 Pretreatment of deperaffinized tissue with heat-induced epitope retrieval is recommended. Use Polymer anti Mouse/Rabbit IgG as a detection system. <i>Positive Control:</i> Lymph node or tonsil.
Reactivity:	Human
Host:	Mouse
Isotype:	IgG1
Clonality:	Monoclonal
Immunogen:	Hairy cell leukemia cells.
Specificity:	Clone 4KB4 is useful in study on the subpopulation of CD4+ or CD8+ T-cells. It can especially be used to differentiate T-cell lymphomas (CD45RO+) from B cell lymphomas (D45RA+). Cellular Localization: Cell membrane.
Formulation:	State: Supernatant State: Liquid Tissue Culture Supernatant with 0.2% BSA and 15mM Sodium Azide.
Conjugation:	Unconjugated
Storage:	Store the antibody undiluted at 2-8°C.
Stability:	Shelf life: one year from despatch.
Gene Name:	protein tyrosine phosphatase, receptor type C
Database Link:	Entrez Gene 9332 Human Entrez Gene 5788 Human P08575



[View online »](#)

Background:

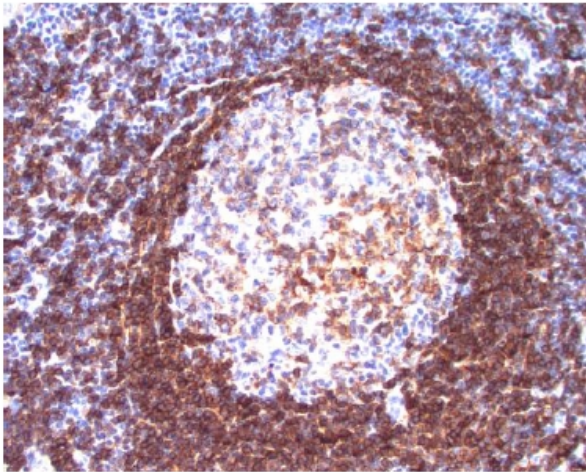
CD45 or Leukocyte Common Antigen (LCA/T200) belongs to a family of membrane sialoglycoproteins with MW of 180kDa-220kDa. Human CD45 contains three exons which encode peptide segments designated A, B and C, respectively. The differential splicing of the exons generates various isoforms. CD45RA is a single chain glycoprotein. It is expressed on approximately 40-50% of peripheral CD4+ T-cells, 50% of peripheral CD8+ T-cells, B-cells, and leukemic B-cell lines. T-cells expressing CD45RA and CD45RO define complementary, predominantly non-overlapping populations of resting peripheral T-cells. CD45RA are naive or virgin T-cells while, T-cells expressing CD45RO are memory T-cells.

Synonyms:

PTPRC, Leukocyte common antigen, L-CA, T200

Protein Families:

Druggable Genome, Secreted Protein, Transmembrane

Product images:

Formalin-Fixed, Paraffin-Embedded Human lymph node stained with CD45RA antibody Cat.-No. AM10067SU-N using peroxidase conjugate and DAB chromogen. Note the membrane staining of B-cells in mantle (strong) and in follicle (weak).