

## Product datasheet for **AM10064SU-N**

### CD31 (PECAM1) Mouse Monoclonal Antibody [Clone ID: JC70A]

#### Product data:

|                       |   |
|-----------------------|---|
| Product Type:         | Primary Antibodies  |
| Clone Name:           | JC70A   |
| Applications:         | IHC   |
| Recommended Dilution: | <b>Immunohistochemistry on Formalin-Fixed, Paraffin-Embedded Sections:</b> 1/50-1/100<br>Pretreatment of deparaffinized tissue with heat-induced epitope retrieval is recommended.<br>Use Polymer anti Mouse/Rabbit IgG as a detection system.<br><i>Positive Control:</i> Placenta.  |
| Reactivity:           | Human   |
| Host:                 | Mouse   |
| Isotype:              | IgG1  |
| Clonality:            | Monoclonal  |
| Immunogen:            | Preparation of a spleen from a patient with hairy cell leukemia.  |
| Specificity:          | This antibody Recognizes CD31/PECAM1.<br>JC/70A reacts with endothelial cells in normal tissues and in benign and malignant proliferations. In Cryostat Sections and blood smears the antibody also stains megakaryocytes, platelets and occasionally plasma cells. <sup>1</sup> It reacts weakly with mantle zone B cells, peripheral T cells, and neutrophils.<br>Cellular Localization: Cell membrane. |
| Formulation:          | State: Supernatant<br>State: Liquid Tissue Culture Supernatant with 0.2% BSA and 15mM Sodium Azide.   |
| Conjugation:          | Unconjugated  |
| Storage:              | Store the antibody undiluted at 2-8°C.  |
| Stability:            | Shelf life: one year from despatch.   |
| Gene Name:            | platelet and endothelial cell adhesion molecule 1   |
| Database Link:        | <a href="#">Entrez Gene 9332 Human</a> <a href="#">Entrez Gene 5175 Human</a><br><a href="#">P16284</a>   |



[View online »](#)

**Background:**

CD31, also known as platelet endothelial cell adhesion molecule 1 (PECAM1), is a type I integral membrane glycoprotein and a member of the immunoglobulin superfamily of cell surface receptors. It is constitutively expressed on the surface of endothelial cells, and concentrated at the junction between them. It is also weakly expressed on many peripheral lymphoid cells and platelets.

CD31 has been used to measure angiogenesis in association with tumor recurrence. Other studies have also indicated that CD31 and CD34 can be used as markers for myeloid progenitor cells and recognize different subsets of myeloid leukemia infiltrates (granular sarcomas).

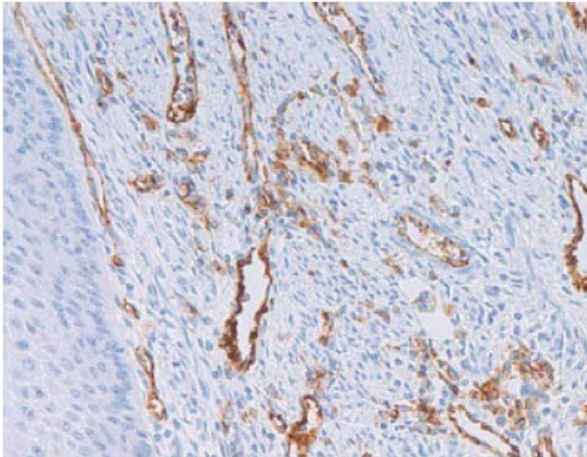
CD31 is expressed in platelets, cultured endothelial cells, monocytes, normal tissue macrophages in tonsil, lung and kidney as well as in skin biopsies from conditions such as sarcoidosis and lepromatous leprosy.

**Synonyms:**

PECAM-1, EndoCAM, GPIIA'

**Protein Families:**

Druggable Genome, Secreted Protein, Transmembrane

**Product images:**

Formalin-Fixed, Paraffin-Embedded Human skin sections stained with CD31 antibody Cat.-No. AM10064SU-N using peroxidase conjugate and DAB chromogen. Note membranous staining of vascular endothelial cells.