

## Product datasheet for **AM10060SU-N**

### CD21 (CR2) Rabbit Monoclonal Antibody [Clone ID: EP3093]

#### Product data:

|                       |  |
|-----------------------|--|
| Product Type:         | Primary Antibodies   |
| Clone Name:           | EP3093   |
| Applications:         | FC, IF, IHC, WB  |
| Recommended Dilution: | <b>Western Blot:</b> A band at approximately 155kDa is detected.<br><b>Immunocytochemistry.</b><br><b>Immunoprecipitation.</b><br><b>Flow Cytometry.</b><br><b>Immunohistochemistry on Frozen Sections.</b><br><b>Immunohistochemistry on Formalin-Fixed, Paraffin-Embedded Sections:</b> 1/100<br>Pretreatment of deparaffinized tissue with heat-induced epitope retrieval is recommended.<br>Use Polymer anti Mouse/Rabbit IgG as a detection system.<br><i>Positive Control:</i> Tonsil, lymph node. |
| Reactivity:           | Human  |
| Host:                 | Rabbit   |
| Isotype:              | IgG  |
| Clonality:            | Monoclonal   |
| Immunogen:            | A synthetic peptide corresponding to residues on the C-terminus of Human CD21.   |
| Specificity:          | Recognizes CD21.<br>Cellular Localization: Cell membrane.  |
| Formulation:          | State: Supernatant<br>State: Tissue Culture Supernatant with 0.2% BSA and 15mM Sodium Azide.   |
| Conjugation:          | Unconjugated   |
| Storage:              | Store the antibody undiluted at 2-8°C.   |
| Stability:            | Shelf life: one year from despatch.  |
| Gene Name:            | complement component 3d receptor 2   |
| Database Link:        | <a href="#">Entrez Gene 9332 Human</a> <a href="#">Entrez Gene 1380 Human</a><br><a href="#">P20023</a>  |



[View online »](#)

**Background:**

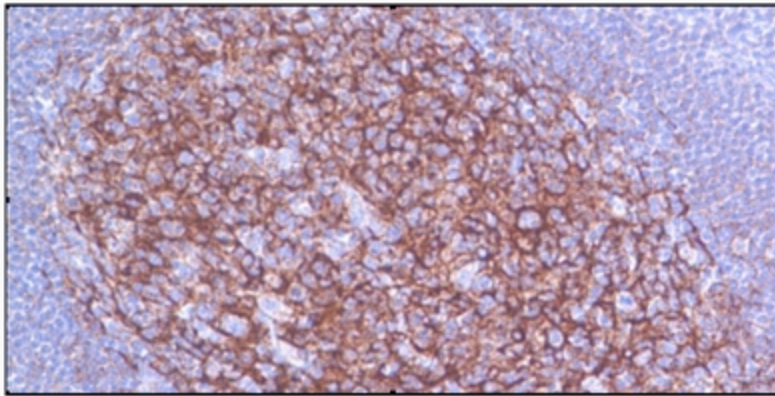
CD21, also known as CR2, C3d receptor and EBV receptor), is expressed strongly on mature B cells, follicular dendritic cells and weakly on immature thymocytes and T lymphocytes. In B-cell ontogeny, CD21 appears after the pre-B-stage, is maintained during peripheral B-cell development and is lost upon terminal differentiation into plasma cells. CD21 expression is also gradually lost after stimulation of B cells in vitro. CD21 functions as receptor for C3d, C3dg and iC3b Complement components, for EBV and for IFN alpha. CD21 binds to CD23 and associates with CD19, CD81 and Leu13 to form a large signal-transduction complex involved in B cell activation. Most macrophage types as well as aiding further study into the function and expression of CD163 antigen itself.

**Synonyms:**

Complement receptor type 2, CR2, C3DR, C3d receptor, EBV Receptor, Dendritic Cell Marker

**Protein Families:**

Druggable Genome, Secreted Protein, Transmembrane

**Product images:**

Formalin-Fixed, Paraffin-Embedded Human tonsil stained with CD21 antibody Cat.-No. AM10060SU-N using peroxidase conjugate and DAB chromogen. Note the membrane staining of follicular dendritic cells and their network.