

## Product datasheet for **AM10056SU-N**

### CD14 Rabbit Monoclonal Antibody [Clone ID: EPR3653]

#### Product data:

Product Type:	Primary Antibodies
Clone Name:	EPR3653
Applications:	IF, IHC, WB
Recommended Dilution:	<b>Western blot:</b> A band at approximately 53kDa is detected. <b>Immunocytochemistry.</b> <b>Immunohistochemistry on Formalin-Fixed, Paraffin-Embedded Sections:</b> 1/100 Pretreatment of deparaffinized tissue with heat-induced epitope retrieval is recommended. Use Polymer anti Mouse/Rabbit IgG as a detection system. <i>Positive Control:</i> Tonsil or lymph node.
Reactivity:	Human
Host:	Rabbit
Isotype:	IgG
Clonality:	Monoclonal
Immunogen:	A synthetic peptide corresponding to residues in Human CD14
Specificity:	This antibody labels monocyte-macrophages and Langerhans cells in Langerhans cell histiocytosis. Cellular Localization: Membrane and cytoplasmic.
Formulation:	State: Supernatant State: Tissue Culture Supernatant with 0.2% BSA and 15mM Sodium Azide.
Conjugation:	Unconjugated
Storage:	Store the antibody undiluted at 2-8°C.
Stability:	Shelf life: one year from despatch.
Gene Name:	CD14 molecule
Database Link:	<a href="#">Entrez Gene 604 Human</a> <a href="#">Entrez Gene 929 Human</a> <a href="#">P08571</a>



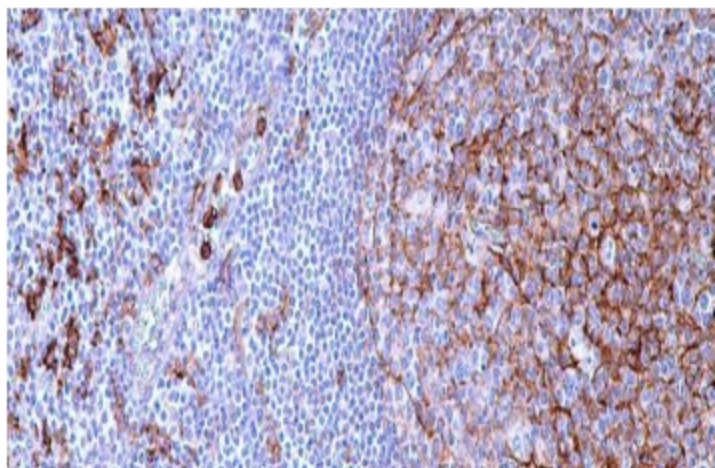
[View online »](#)

**Background:** CD14 is a surface protein preferentially expressed on monocytes/macrophages. It binds lipopolysaccharide binding protein and recently has been shown to bind apoptotic cells. Anti-CD14 antibody labels Kupffer cells in liver sinusoids. In lymphoid tissues, dendritic cells are distinctly stained. Most other normal tissues are negative. Tumor cells are positive in monocytic leukemia and true histiocytic lymphomas for CD14. Sinusoidal histiocytes express CD14 and CD 169, whereas most of the other monocyte-derived cells in reactive lymph node lack these markers. Anti-CD14 labels numerous diffuse large B-cell lymphomas and splenic marginal zone lymphoma but not in other B-cell lymphomas.

**Synonyms:** CD14

**Protein Families:** Druggable Genome, Transcription Factors

**Product images:**



Formalin-Fixed, Paraffin-Embedded Human lymph node stained with CD14 antibody Cat.-No. AM10056SU-N using peroxidase conjugate and DAB chromogen. Note cytoplasmic and membrane staining of Langerhan cells (in follicle) and histiocytes in paracortical region.