

Product datasheet for **AM10053SU-N**

Caldesmon (CALD1) Rabbit Monoclonal Antibody [Clone ID: EP19]

Product data:

Product Type:	Primary Antibodies
Clone Name:	EP19
Applications:	FC, IF, IHC, WB
Recommended Dilution:	Flow Cytometry. Immunocytochemistry. Western blot: A band at approximately 120-150 /70-80 is detected. Immunohistochemistry on Formalin-Fixed, Paraffin-Embedded Sections: 1/50-1/100. Pretreatment of deparaffinized tissue with heat-induced epitope retrieval is recommended. Use Polymer anti Mouse/Rabbit IgG as a detection system. <i>Positive Control:</i> Uterus, colon carcinoma.
Reactivity:	Human
Host:	Rabbit
Isotype:	IgG
Clonality:	Monoclonal
Immunogen:	A synthetic phospho-peptide corresponding to residues surrounding Ser789 of Human Caldesmon.
Specificity:	This antibody Recognizes Human Caldesmon. Cellular Localization: Cytoplasmic.
Formulation:	State: Supernatant State: Liquid Tissue Culture Supernatant with 0.2% BSA and 15mM Sodium Azide.
Conjugation:	Unconjugated
Storage:	Store the antibody undiluted at 2-8°C.
Stability:	Shelf life: one year from despatch.
Gene Name:	caldesmon 1
Database Link:	Entrez Gene 604 Human Entrez Gene 800 Human Q05682



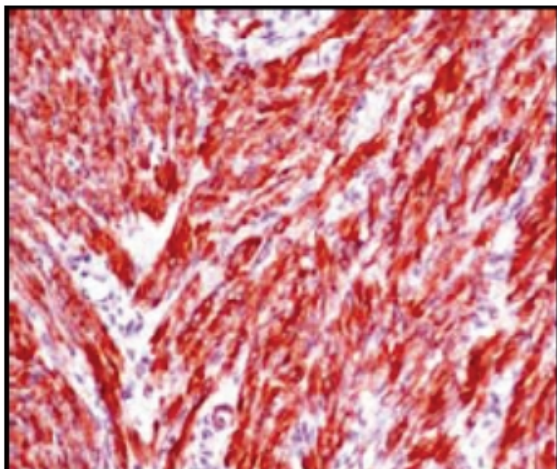
[View online »](#)

Background: Caldesmon is a developmentally regulated protein involved in smooth muscle and non-muscle contraction. Two closely related variants of Human caldesmon have been identified which differ in their electrophoretic mobility and cellular distribution. The h-Caldesmon variant (120-150kDa) is predominantly expressed in smooth muscle whereas l-Caldesmon (70-80kDa) is found in non-muscle tissue and cells. Neither of the two variants has been detected in skeletal muscle.

Synonyms: CALD1, CAD, CDM

Protein Families: Druggable Genome, Transcription Factors

Product images:



Formalin-Fixed, Paraffin-Embedded Human uterus sections stained with Caldesmon antibody Cat.-No. AM10053SU-N using peroxidase conjugate and AEC chromogen. Note cytoplasmic staining of smooth muscle cells.