

Product datasheet for **AM10052SU-N**

MUC16 Rabbit Monoclonal Antibody [Clone ID: EPR1020(2)]

Product data:

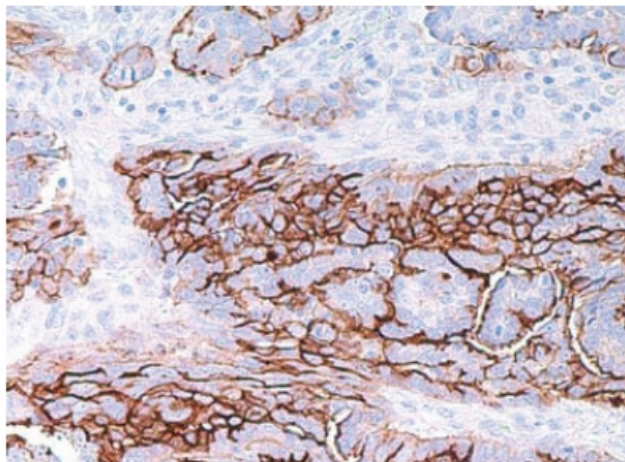
Product Type:	Primary Antibodies
Clone Name:	EPR1020(2)
Applications:	IHC
Recommended Dilution:	Immunohistochemistry on Formalin-Fixed, Paraffin-Embedded Sections: 1/40-1/100 Pretreatment of deparaffinized tissue with heat-induced epitope retrieval is recommended. Use Polymer anti Mouse/Rabbit IgG as a detection system. <i>Positive Control:</i> Ovarian carcinoma.
Reactivity:	Human
Host:	Rabbit
Isotype:	IgG
Clonality:	Monoclonal
Immunogen:	A synthetic peptide corresponding to residues in Human CA125
Specificity:	This antibody recognizes Mucin-16/CA125. Cellular Localization: Extracellular memberane-associated.
Formulation:	State: Purified State: Liquid Tissue Culture Supernatant with 0.2% BSA and 15mM Sodium Azide.
Conjugation:	Unconjugated
Storage:	Store the antibody undiluted at 2-8°C.
Stability:	Shelf life: one year from despatch.
Gene Name:	mucin 16, cell surface associated
Database Link:	Entrez Gene 604 Human Entrez Gene 94025 Human Q8WXI7
Background:	As CA125 (Ovarian Cancer Antigen) is a tumor marker usually associated with ovarian epithelial malignancies. Serum assays are widely used to detect this protein in the monitoring of ovarian cancers. However, CA125 antigen may also be detected by immunohistochemistry and expression has been found in neoplasms such as seminal vesicle carcinoma and anaplastic lymphoma. CA125 antigen is not exclusively found in malignant tumors.
Synonyms:	MUC16, MUC-16, CA-125, CA 125



[View online »](#)

Protein Families: Druggable Genome, Transcription Factors

Product images:



Formalin-Fixed, Paraffin-Embedded Human ovarian carcinoma stained with CA125 antibody Cat.-No. AM10052SU-N using peroxidase conjugate and DAB chromogen. Note cell membrane staining of tumor cells.