

Product datasheet for **AM10049SU-N**

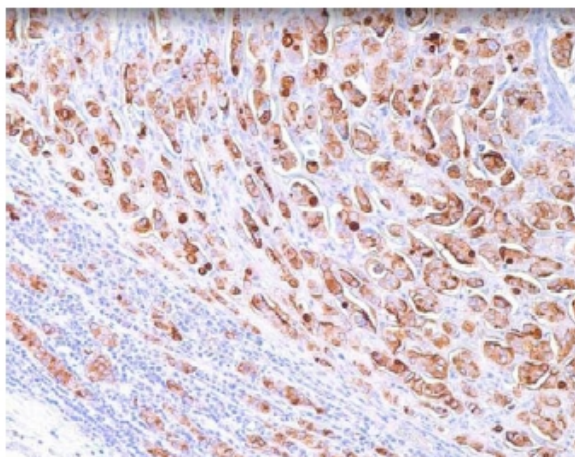
BCA225 Mouse Monoclonal Antibody [Clone ID: CU18]

Product data:

Product Type:	Primary Antibodies
Clone Name:	CU18
Applications:	IHC
Recommended Dilution:	Immunohistochemistry on Formalin-Fixed, Paraffin-Embedded Sections: 1/50 Pretreatment of deparaffinized tissue with heat-induced epitope retrieval is recommended. Use Polymer anti Mouse/Rabbit IgG as a detection system. <i>Positive Control:</i> Breast carcinoma.
Reactivity:	Human
Host:	Mouse
Isotype:	IgG1
Clonality:	Monoclonal
Immunogen:	A synthetic peptide
Specificity:	This antibody recognizes a Human Breast Carcinoma associated glycoprotein BCA-225 (220-225kD). This protein differs in size and distribution from other Breast Carcinoma antigens. Unlike other antibodies against Breast Carcinoma antigens, this antibody does not react with benign or malignant colonic, stomach, prostate, liver, pancreas, thyroid, or parotid tissues. Adenocarcinomas of the lung, ovary and endometrium also stain with this antibody. Cellular Localization: Cytoplasmic.
Formulation:	State: Supernatant State: Liquid Tissue Culture Supernatant with 0.2% BSA and 15mM Sodium Azide.
Conjugation:	Unconjugated
Storage:	Store the antibody undiluted at 2-8°C.
Stability:	Shelf life: one year from despatch.
Background:	BCA225 is a 225 kDa glycoprotein secreted by the T47D breast carcinoma cell line.
Synonyms:	BCA-225



[View online »](#)

Product images:

Formalin-Fixed, Paraffin-Embedded Human breast stained with BCA225 antibody Cat.-No. AM10049SU-N using peroxidase conjugate and DAB chromogen. Note cytoplasmic staining of breast carcinoma cells.