

## Product datasheet for **AM09399PU-N**

### TPMT Mouse Monoclonal Antibody [Clone ID: AT2E7]

#### Product data:

Product Type:	Primary Antibodies
Clone Name:	AT2E7
Applications:	ELISA, WB
Recommended Dilution:	ELISA. Western blot (1:1000).
Reactivity:	Human
Host:	Mouse
Isotype:	IgG1
Clonality:	Monoclonal
Immunogen:	Recombinant human TPMT (1-245aa) purified from E. coli
Specificity:	The antibody recognizes human TPMT. Other species not tested.
Formulation:	PBS, pH 7.4 containing 0.02% Sodium Azide and 10% Glycerol State: Purified State: Liquid purified Ig fraction
Concentration:	lot specific
Purification:	Protein-G affinity chromatography
Conjugation:	Unconjugated
Storage:	Store undiluted at 2-8°C for up to two weeks or (in aliquots) at -20°C for longer. Avoid repeated freezing and thawing.
Stability:	Shelf life: one year from despatch.
Gene Name:	thiopurine S-methyltransferase
Database Link:	<a href="#">Entrez Gene 7172 Human P51580</a>



[View online »](#)

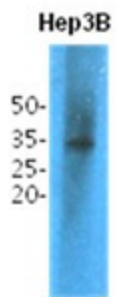
**Background:** TPMT (Thiopurine S-methyltransferase) is a very important enzyme for the metabolism of thiopurine compounds. TPMT pharmacogenetics has been studied extensively because of its clinical significance. Many patients got benefited from the knowledge of TPMT genotype-phenotype correlation. Also, TPMT activity exhibits autosomal codominant genetic polymorphism, and patients inheriting TPMT-deficiency are at high risk of potentially fatal hematopoietic toxicity.

**Synonyms:** Thiopurine S-methyltransferase

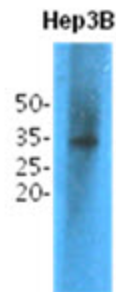
**Protein Families:** Druggable Genome

**Protein Pathways:** Drug metabolism - other enzymes

### Product images:



The cell lysates (40ug) were resolved by SDS-PAGE, transferred to PVDF membrane and probed with anti-human TPMT antibody (1:1,000). Proteins were visualized using a goat anti-mouse secondary antibody conjugated to HRP and an ECL detection system.



Western blot analysis The cell lysates (40 ug) were resolved by SDS-PAGE, transferred to PVDF membrane and probed with anti-human TPMT antibody (1:1000). Proteins were visualized using a goat anti-mouse secondary antibody conjugated to HRP and an ECL detection system.