

## Product datasheet for **AM09397PU-S**

### Pyruvate Kinase (PKLR) Mouse Monoclonal Antibody [Clone ID: AT1E3]

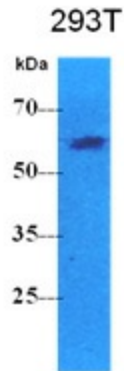
#### Product data:

Product Type:	Primary Antibodies
Clone Name:	AT1E3
Applications:	ELISA, WB
Recommended Dilution:	ELISA. Western blot (1:500).
Reactivity:	Human
Host:	Mouse
Isotype:	IgG1
Clonality:	Monoclonal
Immunogen:	Recombinant human PKLR (47-574aa) purified from E. coli
Specificity:	The antibody recognizes human PKLR. Other species not tested.
Formulation:	PBS, pH 7.4 containing 0.02% Sodium Azide and 10% Glycerol State: Purified State: Liquid purified Ig fraction
Concentration:	lot specific
Purification:	Protein-G affinity chromatography
Conjugation:	Unconjugated
Storage:	Store undiluted at 2-8°C for up to two weeks or (in aliquots) at -20°C for longer. Avoid repeated freezing and thawing.
Stability:	Shelf life: one year from despatch.
Gene Name:	pyruvate kinase, liver and RBC
Database Link:	<a href="#">Entrez Gene 5313 Human P30613</a>
Background:	PKLR is a pyruvate kinase that catalyzes the transphosphorylation of phosphoenolpyruvate into pyruvate and ATP, which is the rate-limiting step of glycolysis. The PKLR gene encodes the L- and R-type isoenzymes through alternative splicing events under the control of different promoters. The L-type isoform also exists as a tetramer and is upregulated by glucose with implications in maturity-onset diabetes of the young.

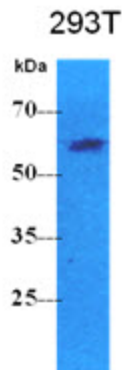


[View online »](#)

<b>Synonyms:</b>	PK1, PKL, Pyruvate kinase R/L, Pyruvate kinase 1, R-type/L-type pyruvate kinase, Red cell/liver pyruvate kinase
<b>Protein Families:</b>	Druggable Genome
<b>Protein Pathways:</b>	Glycolysis / Gluconeogenesis, Insulin signaling pathway, Maturity onset diabetes of the young, Metabolic pathways, Purine metabolism, Pyruvate metabolism, Type II diabetes mellitus

**Product images:**

The cell lysates (40ug) were resolved by SDS-PAGE, transferred to PVDF membrane and probed with anti-human PKLR antibody (1:500). Proteins were visualized using a goat anti-mouse secondary antibody conjugated to HRP and an ECL detection system.



Western blot analysis: The cell lysates (40 ug) were resolved by SDS-PAGE, transferred to PVDF membrane and probed with anti-human PKLR antibody (1:500). Proteins were visualized using a goat anti-mouse secondary antibody conjugated to HRP and an ECL detection system.