

## Product datasheet for **AM09397PU-N**

### Pyruvate Kinase (PKLR) Mouse Monoclonal Antibody [Clone ID: AT1E3]

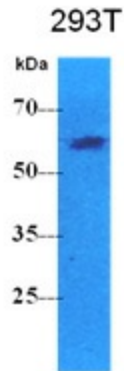
#### Product data:

|                       |   |
|-----------------------|---|
| Product Type:         | Primary Antibodies  |
| Clone Name:           | AT1E3   |
| Applications:         | ELISA, WB   |
| Recommended Dilution: | ELISA.<br>Western blot (1:500).   |
| Reactivity:           | Human   |
| Host:                 | Mouse   |
| Isotype:              | IgG1  |
| Clonality:            | Monoclonal  |
| Immunogen:            | Recombinant human PKLR (47-574aa) purified from E. coli   |
| Specificity:          | The antibody recognizes human PKLR. Other species not tested.   |
| Formulation:          | PBS, pH 7.4 containing 0.02% Sodium Azide and 10% Glycerol<br>State: Purified<br>State: Liquid purified Ig fraction   |
| Concentration:        | lot specific  |
| Purification:         | Protein-G affinity chromatography   |
| Conjugation:          | Unconjugated  |
| Storage:              | Store undiluted at 2-8°C for up to two weeks or (in aliquots) at -20°C for longer.<br>Avoid repeated freezing and thawing.  |
| Stability:            | Shelf life: one year from despatch.   |
| Gene Name:            | pyruvate kinase, liver and RBC  |
| Database Link:        | <a href="#">Entrez Gene 5313 Human P30613</a>   |
| Background:           | PKLR is a pyruvate kinase that catalyzes the transphosphorylation of phosphoenolpyruvate into pyruvate and ATP, which is the rate-limiting step of glycolysis. The PKLR gene encodes the L- and R-type isoenzymes through alternative splicing events under the control of different promoters. The L-type isoform also exists as a tetramer and is upregulated by glucose with implications in maturity-onset diabetes of the young. |

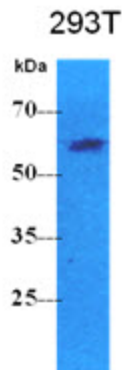


[View online »](#)

|                          |  |
|--------------------------|--|
| <b>Synonyms:</b>         | PK1, PKL, Pyruvate kinase R/L, Pyruvate kinase 1, R-type/L-type pyruvate kinase, Red cell/liver pyruvate kinase  |
| <b>Protein Families:</b> | Druggable Genome   |
| <b>Protein Pathways:</b> | Glycolysis / Gluconeogenesis, Insulin signaling pathway, Maturity onset diabetes of the young, Metabolic pathways, Purine metabolism, Pyruvate metabolism, Type II diabetes mellitus |

**Product images:**

The cell lysates (40ug) were resolved by SDS-PAGE, transferred to PVDF membrane and probed with anti-human PKLR antibody (1:500). Proteins were visualized using a goat anti-mouse secondary antibody conjugated to HRP and an ECL detection system.



Western blot analysis: The cell lysates (40 ug) were resolved by SDS-PAGE, transferred to PVDF membrane and probed with anti-human PKLR antibody (1:500). Proteins were visualized using a goat anti-mouse secondary antibody conjugated to HRP and an ECL detection system.