

## Product datasheet for **AM09396PU-S**

### eIF2 alpha (EIF2S1) Mouse Monoclonal Antibody [Clone ID: AT5E10]

#### Product data:

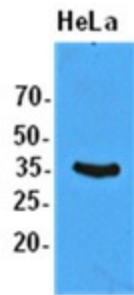
Product Type:	Primary Antibodies
Clone Name:	AT5E10
Applications:	ELISA, IHC, WB
Recommended Dilution:	ELISA. Western blot (1:1,000). Immunohistochemistry on Paraffin Sections (10 µg/ml).
Reactivity:	Human
Host:	Mouse
Isotype:	IgG2b
Clonality:	Monoclonal
Immunogen:	Recombinant human EIF2S1 (1-315aa) purified from E. coli
Specificity:	The antibody recognizes human EIF2S1. Other species not tested.
Formulation:	PBS, pH 7.4 containing 0.02% Sodium Azide and 10% Glycerol State: Purified State: Liquid purified Ig fraction
Concentration:	lot specific
Purification:	Protein-G affinity chromatography
Conjugation:	Unconjugated
Storage:	Store undiluted at 2-8°C for up to two weeks or (in aliquots) at -20°C for longer. Avoid repeated freezing and thawing.
Stability:	Shelf life: one year from despatch.
Gene Name:	eukaryotic translation initiation factor 2 subunit alpha
Database Link:	<a href="#">Entrez Gene 1965 Human P05198</a>
Background:	Eukaryotic translation initiation factor 2, subunit 1 alpha (EIF2S1) is plays a central role in initiating translation, and provides for a rate-limiting step in protein synthesis. The phosphorylation of alpha-subunit of EIF2S1 effectively prevents formation of the EIF2S1/GTP/Met-tRNAi complex and inhibits global protein synthesis.



[View online »](#)

Synonyms: eIF2-A, eIF-2A, eIF-2-alpha, eIF-2alpha, eIF2 alpha

### Product images:



The extracts of HeLa (50ug) were resolved by SDS-PAGE, transferred to PVDF membrane and probed with anti-human EIF2S1 (1:1000). Proteins were visualized using a goat anti-mouse secondary antibody conjugated to HRP and an ECL detection system.



Western blot analysis: The extracts of HeLa (50 ug) were resolved by SDS-PAGE, transferred to PVDF membrane and probed with anti-human EIF2S1 (1:1000). Proteins were visualized using a goat anti-mouse secondary antibody conjugated to HRP and an ECL detection system.