

## Product datasheet for **AM09395PU-N**

### ARF1 Mouse Monoclonal Antibody [Clone ID: AT1B3]

#### Product data:

Product Type:	Primary Antibodies
Clone Name:	AT1B3
Applications:	ELISA, FC, IF, WB
Recommended Dilution:	<b>ELISA.</b> <b>Western blot</b> (1/1000). <b>Flow Cytometry.</b> <b>Immunofluorescence.</b>
Reactivity:	Human
Host:	Mouse
Isotype:	IgG1
Clonality:	Monoclonal
Immunogen:	Recombinant Human ARF1 (1-181 aa) purified from E. coli
Specificity:	The antibody recognizes Human ARF1. Other species not tested.
Formulation:	PBS, pH 7.4 containing 0.02% Sodium Azide and 10% Glycerol State: Purified State: Liquid purified Ig fraction
Concentration:	lot specific
Purification:	Protein-G Affinity Chromatography
Conjugation:	Unconjugated
Storage:	Store undiluted at 2-8°C for up to two weeks or (in aliquots) at -20°C for longer. Avoid repeated freezing and thawing.
Stability:	Shelf life: one year from despatch.
Gene Name:	ADP ribosylation factor 1
Database Link:	<a href="#">Entrez Gene 375 Human P84077</a>



[View online »](#)

**Background:**

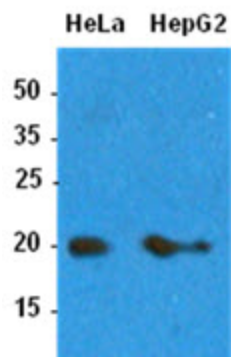
ADP-ribosylation factor 1 (ARF1) is a member of the human ARF gene family. The family member is essential and ubiquitous in eukaryotes, being involved in vesicular transport and functioning as an activator of phospholipase D and cholera toxin. The functions of ARF proteins in membrane traffic and organelle integrity are intimately tied to its reversible association with membranes and specific interactions with membrane phospholipids. ARF1 is various membrane trafficking events in the ER-Golgi system and in the maintenance of organelle structure. Inactive ARF1 (ARF1-GDP) localizes in the cytoplasm, while the active form (ARF1-GTP) localizes in the membrane.

**Synonyms:**

ADP-ribosylation factor 1

**Protein Pathways:**

Vibrio cholerae infection

**Product images:**

Western blot analysis: The cell lysates (35 ug) were resolved by SDS-PAGE, transferred to PVDF membrane and probed with anti-human ARF1 antibody (1:1,000). Proteins were visualized using a goat anti-mouse secondary antibody conjugated to HRP and an ECL detection system.