

## Product datasheet for **AM09390PU-S**

### CASQ2 Mouse Monoclonal Antibody [Clone ID: AT4E10]

#### Product data:

Product Type:	Primary Antibodies
Clone Name:	AT4E10
Applications:	ELISA, IF, WB
Recommended Dilution:	<b>ELISA.</b> <b>Western blot</b> (1/1000). <b>Immunofluorescence</b> (1/100).
Reactivity:	Human, Mouse
Host:	Mouse
Isotype:	IgG1
Clonality:	Monoclonal
Immunogen:	Recombinant human CASQ2 (20-399aa) purified from E. coli
Specificity:	The antibody recognizes Human and Mouse CASQ2. Other species not tested.
Formulation:	PBS, pH 7.4 containing 0.02% Sodium Azide and 10% Glycerol State: Purified State: Liquid purified Ig fraction
Concentration:	lot specific
Purification:	Protein-G Affinity Chromatography
Conjugation:	Unconjugated
Storage:	Store undiluted at 2-8°C for up to two weeks or (in aliquots) at -20°C for longer. Avoid repeated freezing and thawing.
Stability:	Shelf life: one year from despatch.
Gene Name:	calsequestrin 2
Database Link:	<a href="#">Entrez Gene 12373 Mouse</a> <a href="#">Entrez Gene 845 Human</a> <a href="#">O14958</a>
Background:	CASQ2 (Calsequestrin 2) protein responsible for holding Calcium together with other two proteins junction and triadin at the sarcoplasmic reticulum renders the hear vulnerable to severe cardiac arrhythmias, known as CPVT (catecholaminergic polymorphic ventricular tachycardia), during physical exercise.

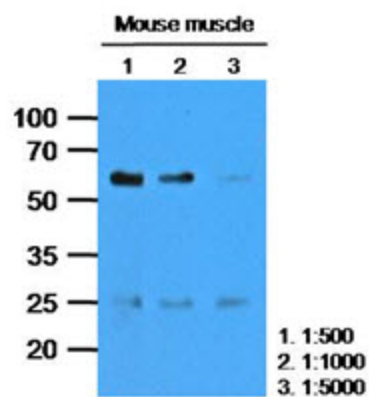


[View online »](#)

Synonyms: CASQ2

Protein Families: Druggable Genome

### Product images:



Western blot analysis: The extracts of Mouse muscle (35 ug) were resolved by SDS-PAGE, transferred to PVDF membrane and probed with anti-human CASQ2 (1:1000). Proteins were visualized using a goat anti-mouse secondary antibody conjugated to HRP and an ECL detection system.