

Product datasheet for **AM09387PU-S**

CTBP1 Mouse Monoclonal Antibody [Clone ID: AT4D6]

Product data:

Product Type:	Primary Antibodies
Clone Name:	AT4D6
Applications:	ELISA, FC, IF, WB
Recommended Dilution:	ELISA. Western blot (1:500). Immunofluorescence. Flow Cytometry.
Reactivity:	Human
Host:	Mouse
Isotype:	IgG2b
Clonality:	Monoclonal
Immunogen:	Recombinant human CTBP1 (1-440aa) purified from E. coli
Specificity:	The antibody recognizes human CTBP1.
Formulation:	PBS, pH 7.4 containing 0.02% Sodium Azide and 10% Glycerol State: Purified State: Liquid purified Ig fraction
Concentration:	lot specific
Purification:	Protein-G affinity chromatography
Conjugation:	Unconjugated
Storage:	Store undiluted at 2-8°C for up to two weeks or (in aliquots) at -20°C for longer. Avoid repeated freezing and thawing.
Stability:	Shelf life: one year from despatch.
Gene Name:	C-terminal binding protein 1
Database Link:	Entrez Gene 1487 Human Q13363



[View online »](#)

Background:

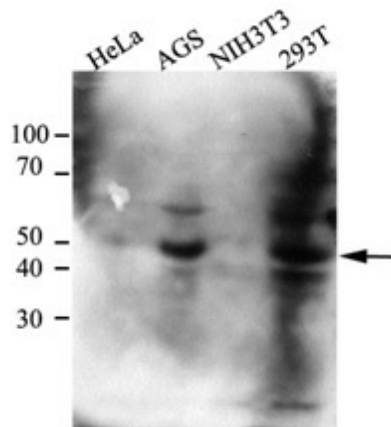
The C-terminal-binding protein (CtBP) was originally identified as a cellular protein that interacts with a C-terminal motif of adenovirus E1A oncoproteins. CtBP is highly conserved in higher eukaryotes. Vertebrates contain two highly homologous CtBP proteins (CtBP1 and CtBP2) while invertebrates contain a single CtBP. CtBP family proteins share significant sequence homology with D-2-hydroxy acid dehydrogenases. Also, CtBP proteins associate with various proteins and functions as a co-repressor of transcription.

Synonyms:

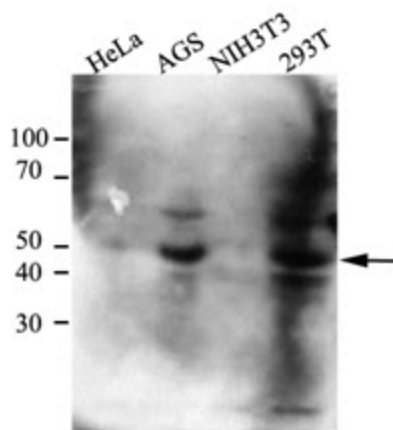
C-terminal-binding protein 1, CTBP

Protein Pathways:

Chronic myeloid leukemia, Notch signaling pathway, Pathways in cancer, Wnt signaling pathway

Product images:

The cell lysates (40ug) were resolved by SDS-PAGE, transferred to PVDF membrane and probed with anti-human CTBP1 (1:500). Proteins were visualized using a goat anti-mouse secondary antibody conjugated to HRP and an ECL detection system.



Western blot: Cell lysates (40ug) were resolved by SDS-PAGE, transferred to PVDF membrane and probed with anti-human CTBP1 (1:500). Proteins were visualized using a goat anti-mouse secondary antibody conjugated to HRP and an ECL detection system.