

Product datasheet for **AM09386PU-S**

NELL2 Mouse Monoclonal Antibody [Clone ID: AT13E7]

Product data:

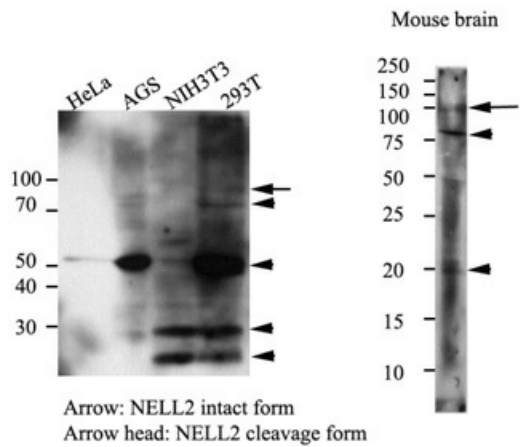
Product Type:	Primary Antibodies
Clone Name:	AT13E7
Applications:	ELISA, WB
Recommended Dilution:	ELISA. Western blot (1:500).
Reactivity:	Human, Mouse
Host:	Mouse
Isotype:	IgG2b
Clonality:	Monoclonal
Immunogen:	Recombinant human NELL2 (30-258aa) purified from E. coli
Specificity:	The antibody recognizes human and mouse NELL2. Other species not tested.
Formulation:	PBS, pH 7.4 containing 0.02% Sodium Azide and 10% Glycerol State: Purified State: Liquid purified Ig fraction
Concentration:	lot specific
Purification:	Protein-G affinity chromatography
Conjugation:	Unconjugated
Storage:	Store undiluted at 2-8°C for up to two weeks or (in aliquots) at -20°C for longer. Avoid repeated freezing and thawing.
Stability:	Shelf life: one year from despatch.
Gene Name:	neural EGFL like 2
Database Link:	Entrez Gene 54003 Mouse Entrez Gene 4753 Human Q99435
Background:	Protein kinase C-binding protein, NELL2 is expressed abundantly in neural tissues and may play important roles in the development of neural tissues. Also, NELL protein contains six epidermal growth factor (EGF)-like repeat domains that participate in calcium binding.
Synonyms:	NELL2, NRP2



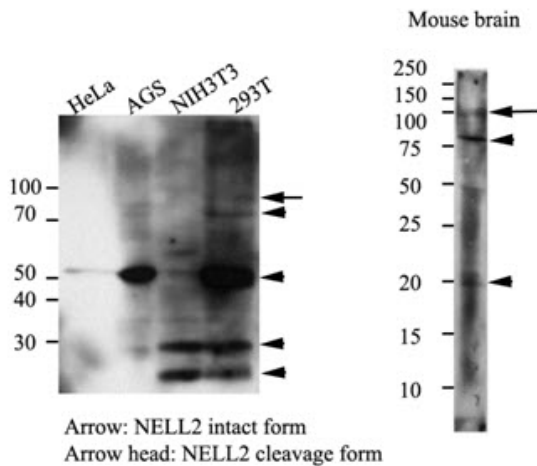
[View online »](#)

Protein Families: Secreted Protein, Transmembrane

Product images:



The cell lysates (40ug) were resolved by SDS-PAGE, transferred to PVDF membrane and probed with anti-human NELL2 (1:500). Proteins were visualized using a goat anti-mouse secondary antibody conjugated to HRP and an ECL detection system.



Western blot: The cell lysates (40ug) were resolved by SDS-PAGE, transferred to PVDF membrane and probed with anti-human NELL2 (1:500). Proteins were visualized using a goat anti-mouse secondary antibody conjugated to HRP and an ECL detection system.