

## Product datasheet for **AM09386PU-N**

### **NELL2 Mouse Monoclonal Antibody [Clone ID: AT13E7]**

#### **Product data:**

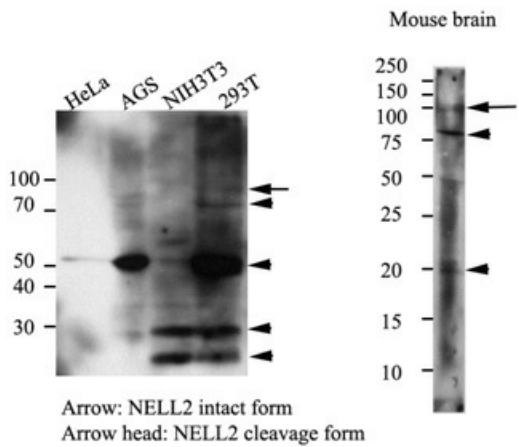
<b>Product Type:</b>	Primary Antibodies
<b>Clone Name:</b>	AT13E7
<b>Applications:</b>	ELISA, WB
<b>Recommended Dilution:</b>	ELISA. Western blot (1:500).
<b>Reactivity:</b>	Human, Mouse
<b>Host:</b>	Mouse
<b>Isotype:</b>	IgG2b
<b>Clonality:</b>	Monoclonal
<b>Immunogen:</b>	Recombinant human NELL2 (30-258aa) purified from E. coli
<b>Specificity:</b>	The antibody recognizes human and mouse NELL2. Other species not tested.
<b>Formulation:</b>	PBS, pH 7.4 containing 0.02% Sodium Azide and 10% Glycerol State: Purified State: Liquid purified Ig fraction
<b>Concentration:</b>	lot specific
<b>Purification:</b>	Protein-G affinity chromatography
<b>Conjugation:</b>	Unconjugated
<b>Storage:</b>	Store undiluted at 2-8°C for up to two weeks or (in aliquots) at -20°C for longer. Avoid repeated freezing and thawing.
<b>Stability:</b>	Shelf life: one year from despatch.
<b>Gene Name:</b>	neural EGFL like 2
<b>Database Link:</b>	<a href="#">Entrez Gene 54003 Mouse</a> <a href="#">Entrez Gene 4753 Human</a> <a href="#">Q99435</a>
<b>Background:</b>	Protein kinase C-binding protein, NELL2 is expressed abundantly in neural tissues and may play important roles in the development of neural tissues. Also, NELL protein contains six epidermal growth factor (EGF)-like repeat domains that participate in calcium binding.
<b>Synonyms:</b>	NELL2, NRP2



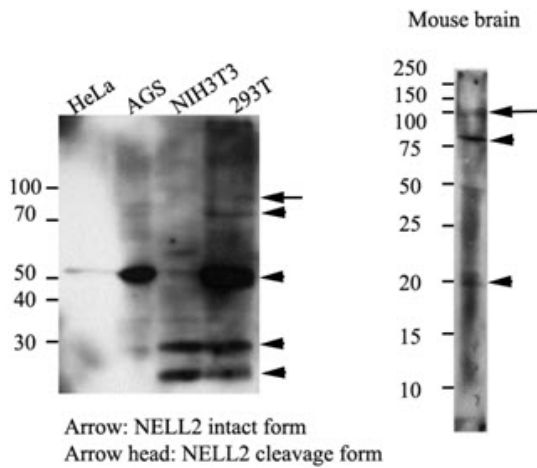
[View online »](#)

Protein Families: Secreted Protein, Transmembrane

**Product images:**



The cell lysates (40ug) were resolved by SDS-PAGE, transferred to PVDF membrane and probed with anti-human NELL2 (1:500). Proteins were visualized using a goat anti-mouse secondary antibody conjugated to HRP and an ECL detection system.



Western blot: The cell lysates (40ug) were resolved by SDS-PAGE, transferred to PVDF membrane and probed with anti-human NELL2 (1:500). Proteins were visualized using a goat anti-mouse secondary antibody conjugated to HRP and an ECL detection system.