

## Product datasheet for **AM09384PU-N**

### **TUBB2B Mouse Monoclonal Antibody [Clone ID: AT5B2]**

#### **Product data:**

Product Type:	Primary Antibodies
Clone Name:	AT5B2
Applications:	ELISA, IF, IHC, WB
Recommended Dilution:	<b>ELISA.</b> <b>Western blot:</b> 1/1000-1/10000. <b>Immunofluorescence:</b> 1/1000-1/5000. <b>Flow Cytometry:</b> 1/100-1/1000. <b>Immunohistochemistry on Paraffin Sections:</b> 5 µg/ml.
Reactivity:	Human, Mouse
Host:	Mouse
Isotype:	IgG2b
Clonality:	Monoclonal
Immunogen:	Recombinant human beta-Tubulin TUBB2B (1-445aa) purified from E. coli
Specificity:	The antibody recognizes Human and Mouse beta-Tubulin. Other species not tested.
Formulation:	PBS, pH 7.4 containing 0.02% Sodium Azide and 10% Glycerol State: Purified State: Liquid purified Ig fraction
Concentration:	lot specific
Purification:	Affinity Chromatography on Protein G
Conjugation:	Unconjugated
Storage:	Store undiluted at 2-8°C for up to two weeks or (in aliquots) at -20°C for longer. Avoid repeated freezing and thawing.
Stability:	Shelf life: one year from despatch.
Gene Name:	tubulin beta 2B class IIb
Database Link:	<a href="#">Entrez Gene 73710 Mouse</a> <a href="#">Entrez Gene 347733 Human</a> <a href="#">Q9BVA1</a>



[View online »](#)

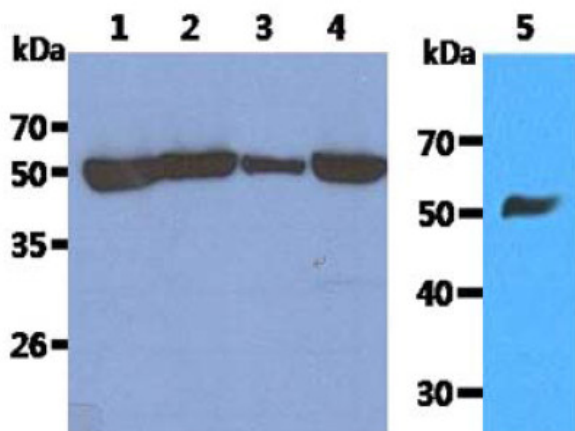
**Background:** Tubulin is a major cytoskeleton component that has five distinct forms. Multiple beta Tubulin isoforms have been characterized and are expressed in mammalian tissues. Tubulin is the major constituent of microtubules. It binds two moles of GTP, one at an exchangeable site on the beta chain and one at a non-exchangeable site on the alpha-chain.

**Synonyms:** Tubulin beta-2B chain, beta II Tubulin B, beta-Tubulin, RP11-506K6.1

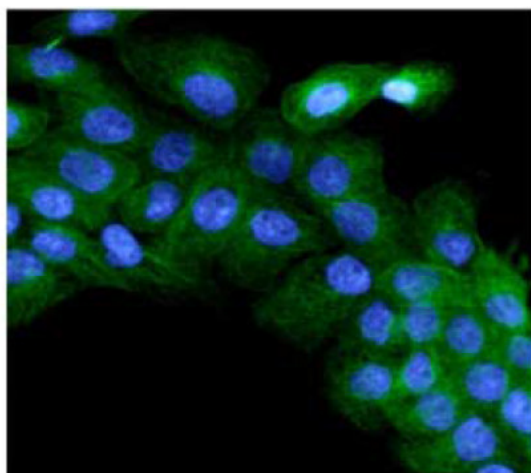
**Protein Families:** Druggable Genome

**Protein Pathways:** Gap junction, Pathogenic Escherichia coli infection

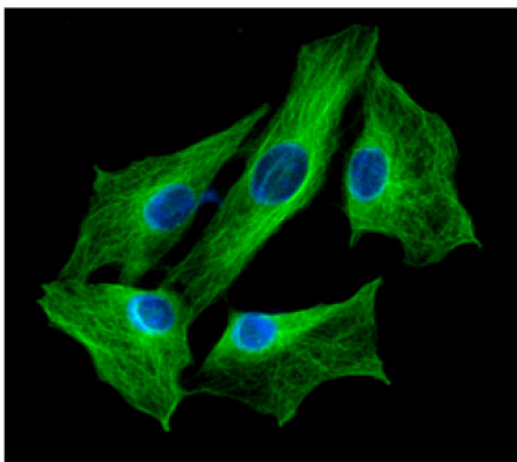
### Product images:



Western blot analysis: The Cell lysate (40ug) and Mouse tissue extracts (35ug) were resolved by SDS-PAGE, transferred to PVDF membrane and probed with anti-human beta-Tubulin (1/5000). Proteins were visualized using a goat anti-mouse secondary antibody conjugated to HRP and an ECL detection system. Lane 1: Jurkat cell lysate. Lane 2: A549 cell lysate. Lane 3: A431 cell lysate. Lane 4: HepG2 cell lysate. Lane 5: Mouse Brain tissue extract.



Immunofluorescence of A431 cells stained with DAPI (Blue) for nucleus staining and monoclonal anti-human beta-Tubulin antibody (1/500) with Alexa Fluor 488 (Green).



Immunofluorescence of Balb/3T3 cells stained with DAPI (Blue) for nucleus staining and monoclonal anti-human beta-Tubulin antibody (1/200) with Alexa Fluor 488 (Green).