

## Product datasheet for **AM09381PU-S**

### Cytokeratin 18 (KRT18) (79-430) Mouse Monoclonal Antibody [Clone ID: AT2G3]

#### Product data:

Product Type:	Primary Antibodies
Clone Name:	AT2G3
Applications:	ELISA, FC, IF, IHC, WB
Recommended Dilution:	<b>ELISA:</b> <b>Western Blot:</b> 1/250-1/1000. <b>Immunofluorescence:</b> 1/250-1/1000. <b>Immunohistochemistry on Paraffin Embedded Tissues:</b> 1/50.
Reactivity:	Human
Host:	Mouse
Isotype:	IgG2b
Clonality:	Monoclonal
Immunogen:	Recombinant Human KRT18 (79-430 aa) purified from E. coli
Specificity:	The antibody recognizes Human KRT18. Other species not tested.
Formulation:	PBS, pH 7.4 containing 0.02% Sodium Azide and 10% Glycerol State: Purified State: Liquid purified Ig fraction
Concentration:	lot specific
Purification:	Affinity Chromatography on Protein G
Conjugation:	Unconjugated
Storage:	Store undiluted at 2-8°C for up to two weeks or (in aliquots) at -20°C for longer. Avoid repeated freezing and thawing.
Stability:	Shelf life: one year from despatch.
Gene Name:	keratin 18
Database Link:	<a href="#">Entrez Gene 3875 Human P05783</a>



[View online »](#)

**Background:**

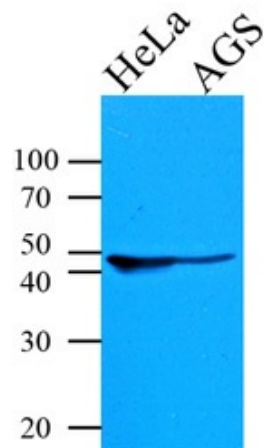
Keratins (cytokeratins) are intermediate filament proteins that are mainly expressed in epithelial cells. Keratin heterodimers composed of an acidic keratin (or type I keratin, keratins 9 to 23) and a basic keratin (or type II keratin, keratins 1 to 8) assemble to form filaments. Keratin isoforms demonstrate tissue- and differentiation-specific profiles that make them useful as biomarkers. Mutations in keratin genes are associated with skin disorders, liver and pancreatic diseases, and inflammatory intestinal diseases.

**Synonyms:**

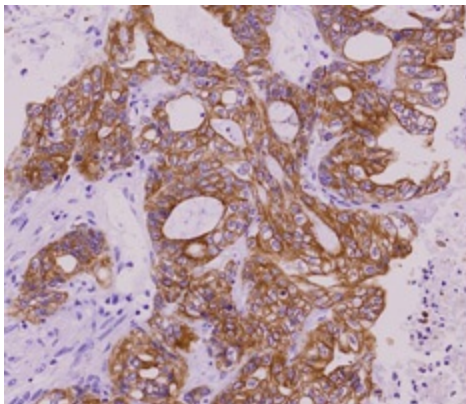
Cytokeratin-18, CK18, Keratin-18, Keratin 18, KRT18, CYK18, K18

**Protein Pathways:**

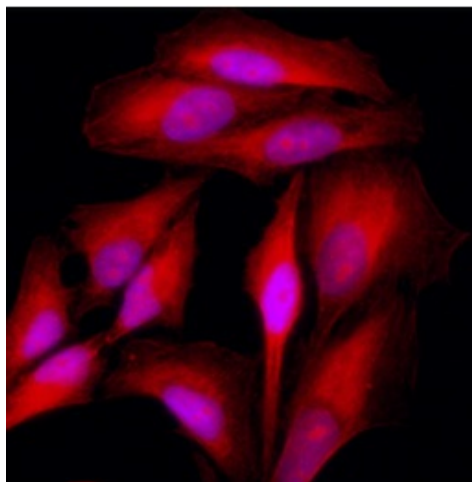
Pathogenic Escherichia coli infection

**Product images:**


Western blot analysis: Cell lysates of HeLa and AGS (35 ug) were resolved by SDS-PAGE, transferred to PVDF membrane and probed with anti-human Cytokeratin-18 (1:1000). Proteins were visualized using a goat anti-mouse secondary antibody conjugated to HRP and an ECL detection system.



Immunohistochemistry: Paraffin embedded sections of colorectal cancer tissue were incubated with anti-human Cytokeratin-18 antibody (1:50) for 2 hours at room temperature. Antigen retrieval was performed in 0.1M sodium citrate buffer and detected using Diaminobenzidine (DAB).



Immunofluorescence of HeLa cells stained with Hoechst 3342 (Blue) for nucleus staining and monoclonal anti-human Cytokeratin-18 antibody (1:500) with Texas Red (Red).