

## Product datasheet for **AM09378PU-S**

### **BCL2 (1-211) Mouse Monoclonal Antibody [Clone ID: AT1B5]**

#### Product data:

Product Type:	Primary Antibodies
Clone Name:	AT1B5
Applications:	ELISA, FC, IF, WB
Recommended Dilution:	<b>ELISA.</b> <b>Western blot</b> (1:250 - 1:500). <b>Immunofluorescence</b> (1:250 - 1:500). <b>Flow cytometry.</b>
Reactivity:	Human, Mouse
Host:	Mouse
Isotype:	IgG2b
Clonality:	Monoclonal
Immunogen:	Recombinant human Bcl-2 (1-211aa) purified from <i>E. coli</i>
Specificity:	The antibody recognizes Bcl-2 (B-cell lymphoma protein 2 alpha) at aa 1-211.
Formulation:	PBS, pH 7.4 containing 0.02% Sodium Azide and 10% Glycerol State: Purified State: Liquid purified Ig fraction
Concentration:	lot specific
Purification:	Protein-G affinity chromatography
Conjugation:	Unconjugated
Storage:	Store undiluted at 2-8°C for up to two weeks or (in aliquots) at -20°C for longer. Avoid repeated freezing and thawing.
Stability:	Shelf life: one year from despatch.
Gene Name:	B-cell CLL/lymphoma 2
Database Link:	<a href="#">Entrez Gene 12043 Mouse</a> <a href="#">Entrez Gene 596 Human</a> <a href="#">P10415</a>



[View online »](#)

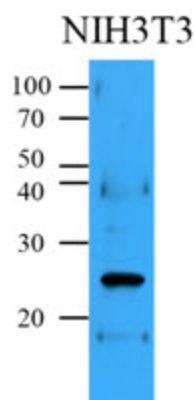
**Background:** Bcl-2 (B-cell lymphoma protein 2 alpha) is an anti-apoptotic protein located primarily in the outer mitochondrial membrane. It blocks the apoptotic death of some cells such as lymphocytes. BCL-2 is thought to regulate cell death by controlling the mitochondrial membrane permeability during apoptosis. Bcl-2 protein has anti-apoptotic functions through inhibiting caspase activity either by preventing the release of cytochrome c from the mitochondria and/or by binding to the apoptosis-activating factor (APAF-1).

**Synonyms:** BCL2, Bcl-2 alpha

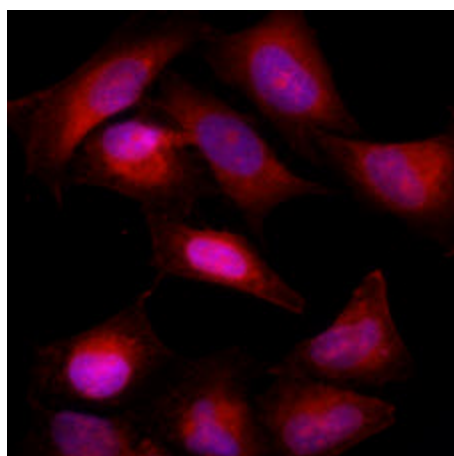
**Protein Families:** Druggable Genome, ES Cell Differentiation/IPS, Stem cell - Pluripotency, Transmembrane

**Protein Pathways:** Amyotrophic lateral sclerosis (ALS), Apoptosis, Colorectal cancer, Focal adhesion, Neurotrophin signaling pathway, Pathways in cancer, Prostate cancer, Small cell lung cancer

## Product images:



Western blot analysis: Cell lysates (35 ug) were resolved by SDS-PAGE, transferred to PVDF membrane and probed with anti-human Bcl-2 (1:500). Proteins were visualized using a goat anti-mouse secondary antibody conjugated to HRP and an ECL detection system.



Immunofluorescence of HeLa cells stained with Hoechst 33342 (Blue) for nucleus staining and with monoclonal anti-human Bcl-2 antibody (1:500) with Texas Red (Red).