

## Product datasheet for **AM09375PU-S**

### **TUBB2B Mouse Monoclonal Antibody [Clone ID: AT5B3]**

#### **Product data:**

Product Type:	Primary Antibodies
Clone Name:	AT5B3
Applications:	ELISA, IF, IHC, WB
Recommended Dilution:	<b>ELISA.</b> <b>Western blot:</b> 1/250-1/500. <b>Immunofluorescence:</b> 1/250-1/500. <b>Immunohistochemistry on Paraffin Embedded tissues:</b> 1/50.
Reactivity:	Human, Mouse
Host:	Mouse
Isotype:	IgG2a
Clonality:	Monoclonal
Immunogen:	Recombinant Human TUBB2b (1-445aa) purified from <i>E. coli</i> .
Specificity:	The antibody recognizes Human and Mouse TUBB2B. Other species not tested.
Formulation:	PBS, pH 7.4 containing 0.02% Sodium Azide and 10% Glycerol State: Purified State: Liquid purified Ig fraction
Concentration:	lot specific
Purification:	Affinity Chromatography on Protein G
Conjugation:	Unconjugated
Storage:	Store undiluted at 2-8°C for up to two weeks or (in aliquots) at -20°C for longer. Avoid repeated freezing and thawing.
Stability:	Shelf life: one year from despatch.
Gene Name:	tubulin beta 2B class IIb
Database Link:	<a href="#">Entrez Gene 73710 Mouse</a> <a href="#">Entrez Gene 347733 Human</a> <a href="#">Q9BVA1</a>



[View online »](#)

**Background:**

The protein encoded by this gene is a beta isoform of tubulin, which binds GTP and is a major component of microtubules. Multiple beta Tubulin isoforms have been characterized and are expressed in mammalian tissues. Tubulin is the major constituent of microtubules. It binds two moles of GTP, one at an exchangeable site on the beta chain and one at a non-exchangeable site on the alpha-chain. TUBB2b is mainly expressed in developing neurons with a dominant expression during the critical steps of corticogenesis. Also, TUBB2B is a new critical gene involved in neuronal migration. It is present in the nuclei and nucleoplasm. Defects in this gene are a cause of asymmetric polymicrogyria.

**Synonyms:**

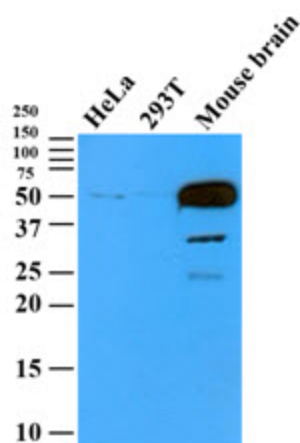
Tubulin beta-2B chain, beta II Tubulin B, beta-Tubulin, RP11-506K6.1

**Protein Families:**

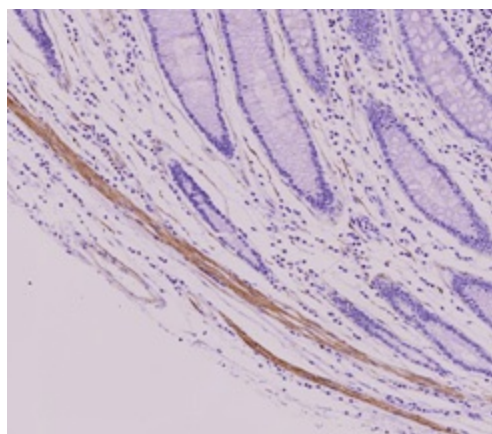
Druggable Genome

**Protein Pathways:**

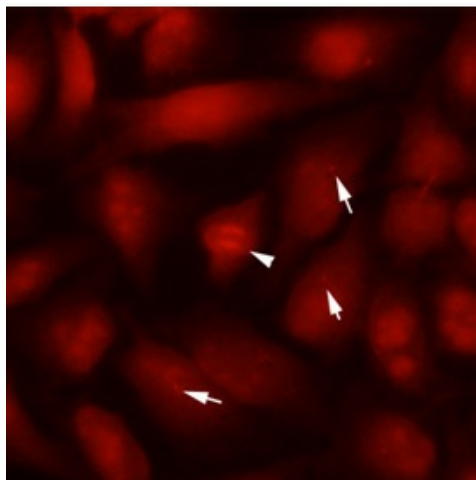
Gap junction, Pathogenic Escherichia coli infection

**Product images:**

Western Blot analysis: Cell lysates (35ug) were resolved by SDS-PAGE, transferred to PVDF membrane and probed with anti-human TUBB2b (1:500). Proteins were visualized using a goat anti-mouse secondary antibody conjugated to HRP and an ECL detection system.



Immunohistochemistry: Paraffin embedded sections of colorectal cancer tissue were incubated with anti-human TUBB2b antibody (1:50) for 2 hours at room temperature. Antigen retrieval was performed in 0.1M sodium citrate buffer and detected using Diaminobenzidine (DAB).



Immunofluorescence of human SW480 cells stained with monoclonal anti-human TUBB2b antibody (1:250) with Texas Red (Red). Arrow head: Mitotic cell, Arrow: MTOC (microtubule organizing center).