

## Product datasheet for **AM09372PU-N**

### **Aurora B (AURKB) Mouse Monoclonal Antibody [Clone ID: AT2B1]**

#### **Product data:**

Product Type:	Primary Antibodies
Clone Name:	AT2B1
Applications:	ELISA, FC, IF, WB
Recommended Dilution:	<b>ELISA.</b> <b>WesternBlot.</b> <b>Flow Cytometry.</b> <b>Immunofluorescence:</b> 1/1000-1/2000.
Reactivity:	Human
Host:	Mouse
Isotype:	IgG2b
Clonality:	Monoclonal
Immunogen:	Recombinant human Aurora kinase B (1-344aa) purified from E. coli
Specificity:	The antibody recognizes Human Aurora kinase B. Other species not tested.
Formulation:	PBS, pH 7.4 containing 0.02% Sodium Azide and 10% Glycerol State: Purified State: Liquid purified Ig fraction
Concentration:	lot specific
Purification:	Affinity Chromatography on Protein G
Conjugation:	Unconjugated
Storage:	Store undiluted at 2-8°C for up to two weeks or (in aliquots) at -20°C for longer. Avoid repeated freezing and thawing.
Stability:	Shelf life: one year from despatch.
Gene Name:	aurora kinase B
Database Link:	<a href="#">Entrez Gene 9212 Human Q96GD4</a>



[View online »](#)

**Background:**

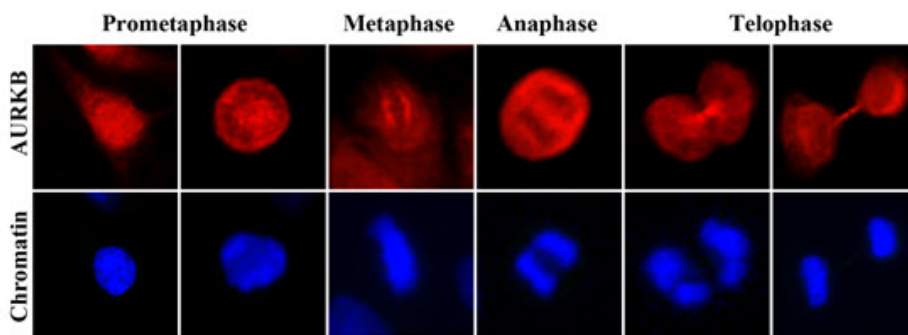
The aurora family (A, B and C) are serine threonine kinases and key regulators of chromosome segregation during mitosis. Aurora kinase B is a chromosomal passenger protein that regulates chromosome segregation and cytokinesis. Aurora kinase B is associated with the level of genetic instability within tumours and patient survival. It is strongly expressed in exponentially proliferating bronchial epithelial cells in culture and that this expression is markedly reduced in confluent cells. It is also shown that almost all tumours show higher levels of Aurora kinase B expression than their matched normal lung tissues, which could therefore simply be a consequence of a higher proliferative index, or be typical of the progenitor cell and atypical of the bulk of normal lung cells.

**Synonyms:**

Aurora-B, Aurora/IPL1-related kinase 2, STK-1, AURKB, AIK2, AIM1, ARK2, STK12

**Protein Families:**

Druggable Genome, Protein Kinase, Stem cell - Pluripotency

**Product images:**


Immunofluorescence of human HeLa cells stained with Hoechst 3342 (Blue) for chromatin staining and monoclonal anti-human Aurora kinase B antibody. (1:2000) with Texas Red (Red).

**HeLa cells**