

## Product datasheet for **AM09370PU-S**

### Sumo 2 (SUMO2) Mouse Monoclonal Antibody [Clone ID: AT10F1]

#### Product data:

Product Type:	Primary Antibodies
Clone Name:	AT10F1
Applications:	ELISA, IF, IHC, WB
Recommended Dilution:	<b>ELISA.</b> <b>Western blot</b> (~1/1000). <b>Immunofluorescence</b> (1/250-1/500). <b>Immunohistochemistry on Paraffin embedded tissues</b> (1/50). <b>Flow Cytometry</b> (~5 µg in 10 <sup>6</sup> cells).
Reactivity:	Human
Host:	Mouse
Isotype:	IgG2b
Clonality:	Monoclonal
Immunogen:	Recombinant human SUMO2 (1-93aa) purified from E. coli
Specificity:	The antibody recognizes Human SUMO2/3. Other species not tested.
Formulation:	PBS, pH 7.4 containing 0.02% Sodium Azide and 10% Glycerol State: Purified State: Liquid purified Ig fraction
Concentration:	lot specific
Purification:	Protein-G affinity chromatography
Conjugation:	Unconjugated
Storage:	Store undiluted at 2-8°C for up to two weeks or (in aliquots) at -20°C for longer. Avoid repeated freezing and thawing.
Stability:	Shelf life: one year from despatch.
Gene Name:	small ubiquitin-like modifier 2
Database Link:	<a href="#">Entrez Gene 6613 Human P61956</a>



[View online »](#)

**Background:**

SUMO (small ubiquitin-related modifier) is the best-characterized member of a growing family of ubiquitin-related proteins. 8–11 kDa that covalently modify various intracellular proteins. It resembles ubiquitin in its structure, its ability to be ligated to other proteins. SUMO regulates cellular function of a variety of target proteins. SUMO proteins are expressed as their precursor forms. Cleavage of the residues after the 'GG' region of these precursors by SUMO-specific proteases in maturation is a prerequisite for subsequent sumoylation. Notably, SUMO2 and SUMO3 precursors have 96% sequence identity, and recent studies have shown protein substrates conjugated with SUMO2 or SUMO3 have similar, if not identical, biological consequences.

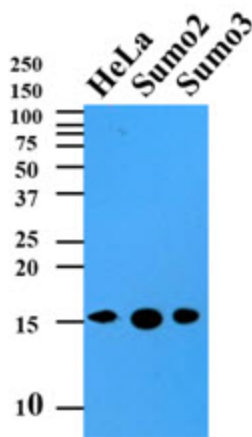
**Synonyms:**

SUMO-2, SMT3B, SMT3H2, HSMT3, Sentrin-2, SUMO-3, SMT3 homolog 1, SMT3H1

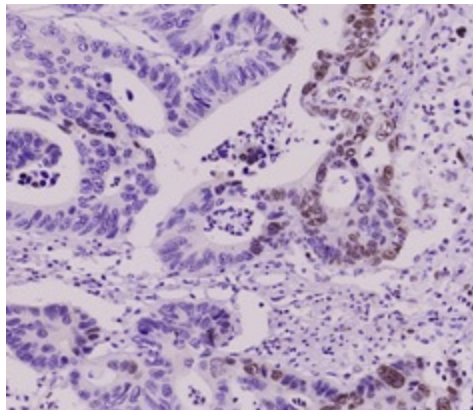
**Protein Families:**

Druggable Genome

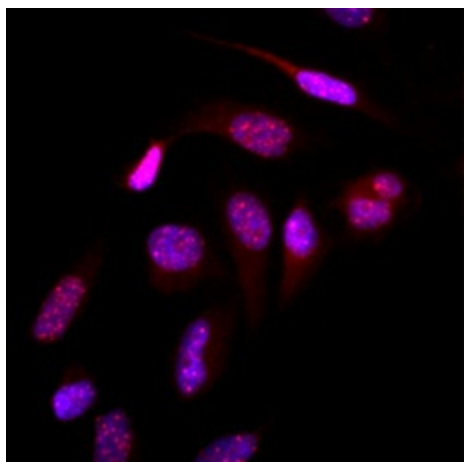
**Product images:**



Cell lysates of HeLa (35ug) and recombinant proteins (10ng) were resolved by SDS-PAGE, transferred to PVDF membrane and probed with anti-human SUMO2/3 (1:500). Proteins were visualized using a goat anti-mouse secondary antibody conjugated to HRP and an ECL detection system.



Immunohistochemistry: Paraffin embedded sections of colorectal cancer tissue were incubated with anti-human SUMO2/3 antibody (1:50) for 2 hours at room temperature. Antigen retrieval was performed in 0.1M sodium citrate buffer and detected using Diaminobenzidine (DAB).



Immunofluorescence of human HeLa cells stained with Hoechst 3342 (Blue) for nucleus staining and monoclonal anti-human SUMO2/3 antibody (1:500) with Texas Red (Red).