

## Product datasheet for **AM09356PU-S**

### IL32 (1-131) Mouse Monoclonal Antibody [Clone ID: AT2F9]

#### Product data:

Product Type:	Primary Antibodies
Clone Name:	AT2F9
Applications:	ELISA, IF, WB
Recommended Dilution:	<b>ELISA.</b> <b>Western blot</b> (1:500 - 1:1000). <b>Immunocytochemistry / Immunofluorescence.</b>
Reactivity:	Human
Host:	Mouse
Isotype:	IgG1
Clonality:	Monoclonal
Immunogen:	Recombinant human IL32 (1-131aa) purified from E. coli
Specificity:	The antibody recognizes human IL-32 at aa1-131. Other species not tested.
Formulation:	PBS, pH 7.4 containing 0.02% Sodium Azide and 10% Glycerol State: Purified State: Liquid purified Ig fraction
Concentration:	lot specific
Purification:	Protein-G affinity chromatography
Conjugation:	Unconjugated
Storage:	Store undiluted at 2-8°C for up to two weeks or (in aliquots) at -20°C for longer. Avoid repeated freezing and thawing.
Stability:	Shelf life: one year from despatch.
Gene Name:	interleukin 32
Database Link:	<a href="#">Entrez Gene 9235 Human P24001</a>



[View online »](#)

**Background:**

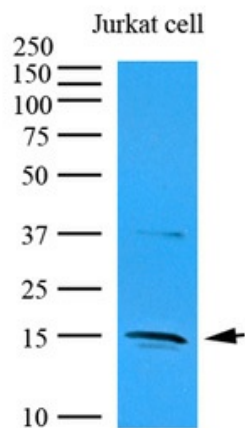
The gene encoding IL32 is located on human chromosome 16p13.3 and is organized into eight exons. IL32 is mainly expressed in natural killer cells, T cells, epithelial cells, and blood monocytes. It can induce the proinflammatory cytokines TNF $\alpha$  and IL1 $\beta$  in murine peritoneal macrophages as well as in phorbol ester-differentiated human THP1 cells. In the inflamed lesions of chronic pancreas, the ductal expression of IL32 was markedly increased. Pancreatic duct cells are the local source of IL32, and IL32 may play an important role in inflammatory responses and pancreatic cancer growth. Recently, a synergism between IL32 and other well characterized players in innate immunity has been documented.

**Synonyms:**

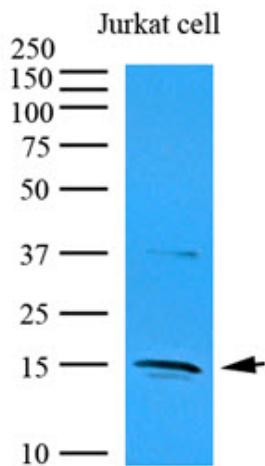
IL-32, NK4, TAIF

**Protein Families:**

Secreted Protein

**Product images:**

Cell lysates of Jurkat (35ug) were resolved by SDS-PAGE, transferred to NC membrane and probed with anti-human IL-32 (1:1000). Proteins were visualized using a goat anti-mouse secondary antibody conjugated to HRP and an ECL detection system.



Western blot analysis: Cell lysates of Jurkat (35 ug) were resolved by SDS-PAGE, transferred to NC membrane and probed with anti-human IL-32 (1:1000). Proteins were visualized using a goat anti-mouse secondary antibody conjugated to HRP and an ECL detection system.