

## Product datasheet for **AM09353PU-N**

### MASPIN (SERPINB5) Mouse Monoclonal Antibody [Clone ID: AT2N6]

#### Product data:

Product Type:	Primary Antibodies
Clone Name:	AT2N6
Applications:	ELISA, IF, WB
Recommended Dilution:	ELISA. Immunofluorescence. Western blot (1:1,000 - 1:2,000).
Reactivity:	Human
Host:	Mouse
Isotype:	IgG2b
Clonality:	Monoclonal
Immunogen:	Recombinant Maspin (1-375 aa) purified from E. coli
Specificity:	The antibody recognizes human Serpin B5 (Maspin). Other species not tested.
Formulation:	PBS, pH 7.4 containing 0.02% Sodium Azide and 10% Glycerol State: Purified State: Liquid purified Ig fraction
Concentration:	lot specific
Purification:	Protein-G affinity chromatography
Conjugation:	Unconjugated
Storage:	Store undiluted at 2-8°C for up to two weeks or (in aliquots) at -20°C for longer. Avoid repeated freezing and thawing.
Stability:	Shelf life: one year from despatch.
Gene Name:	serpin family B member 5
Database Link:	<a href="#">Entrez Gene 5268 Human P36952</a>



[View online »](#)

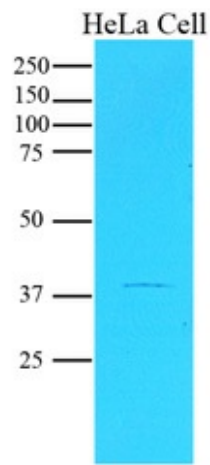
**Background:** Serine (or cysteine) proteinase inhibitor clade B (ovalbumin) member 5, also known as Maspin, is a tumor suppressor protein of serine proteinase inhibitor family. It plays an essential role in embryonic development through critical roles in cell adhesion. Also, it is present in normal breast and prostatic epithelial cells but downregulated in the respective carcinomas.

**Synonyms:** Serpin B5, PI5, PI-5

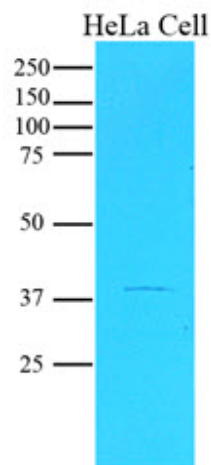
**Protein Families:** Druggable Genome, Secreted Protein

**Protein Pathways:** p53 signaling pathway

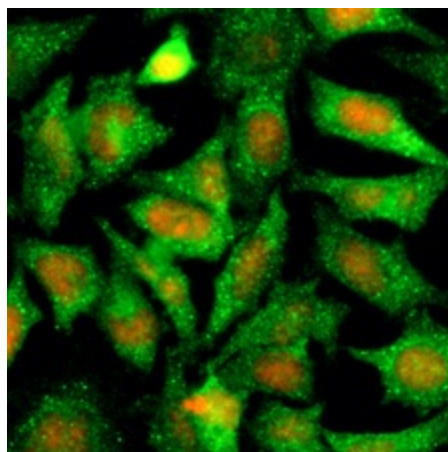
### Product images:



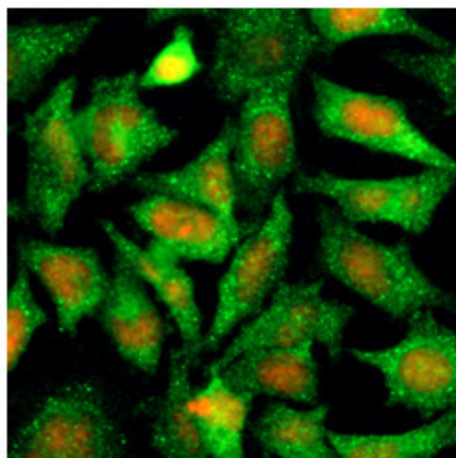
Cell lysates of HeLa (20ug) were resolved by SDS-PAGE, transferred to NC membrane and probed with anti-human Maspin (1:1000). Proteins were visualized using a goat anti-mouse secondary antibody conjugated to HRP and an ECL detection system.



Western blot analysis: Cell lysates of HeLa (20 ug) were resolved by SDS-PAGE, transferred to NC membrane and probed with anti-human Maspin (1:1000). Proteins were visualized using a goat anti-mouse secondary antibody conjugated to HRP and an ECL detection system.



Immunofluorescence of human HeLa cells stained with PI (Red) and monoclonal anti-Maspin antibody (1:500) with Alexa 488 (Green).



Immunofluorescence analysis :  
Immunofluorescence of human HeLa cells stained with PI (Red) and monoclonal anti-Maspin antibody (1:500) with Alexa 488 (Green).