

Product datasheet for **AM09327PU-N**

Mammaglobin A (SCGB2A2) Rabbit Monoclonal Antibody [Clone ID: 31A5]

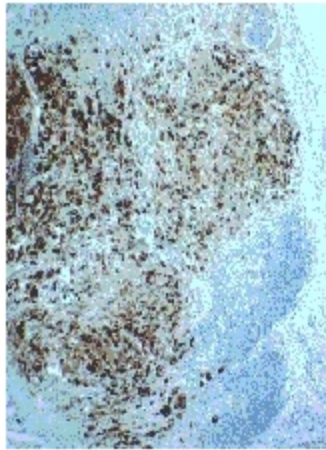
Product data:

Product Type:	Primary Antibodies
Clone Name:	31A5
Applications:	ELISA, IHC, WB
Recommended Dilution:	ELISA. Western Blot. Immunohistochemistry on Paraffin Sections: 1 µg/ml. Formalin-fixed tissue may be pre-treated for 30 min at 100°C with Unmasking Citrate buffer, buffered EDTA or Glycol based solution preferably in a pressure cooker. <i>Positive Control:</i> Mamma carcinoma, skin (eccrine sweat glands).
Reactivity:	Human, Monkey, Mouse
Host:	Rabbit
Isotype:	IgG
Clonality:	Monoclonal
Immunogen:	Recombinant Mammaglobin, whole sequence
Specificity:	This Mammaglobin antibody (clone 31A5) reacts with Human Mammaglobin A (10 kDa), no cross-reaction with Lypophilin B and Lypophilin C (Mammaglobin B). This Mammaglobin antibody (clone 31A5) is suitable for the detection of mammaglobin in metastatic mamma carcinoma, differential diagnosis of metastases in sentinel lymph nodes.
Formulation:	Stabilized Phosphate buffer State: Aff - Purified State: Liquid purified IgG fraction Preservative: 0.09% Sodium Azide
Concentration:	lot specific
Purification:	Affinity Chromatography
Conjugation:	Unconjugated
Storage:	Store undiluted at 2-8°C for one month or (in aliquots) at -20°C for longer. Avoid repeated freezing and thawing.
Stability:	Shelf life: one year from despatch.

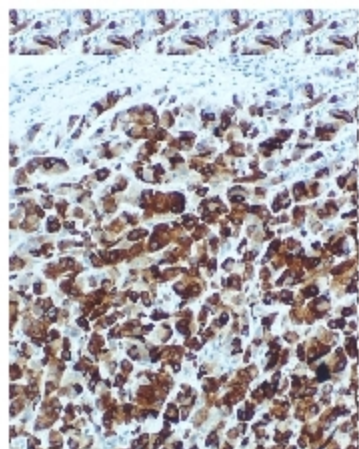


[View online »](#)

Gene Name:	secretoglobin family 2A member 2
Database Link:	Entrez Gene 4250 Human Q13296
Background:	Mammaglobin is a gene that is expressed almost exclusively in the normal breast epithelium and human breast cancer. It is a member of the secretoglobin gene family and forms a heterodimer with lipophilin B. It has been suggested that mammaglobin may be a useful marker for breast cancer clinical research. Studies investigating the detection of mRNA by RT PCR from circulating carcinoma cells in the peripheral blood of breast cancer patients have shown that mammaglobin is a highly specific marker and correlates with several prognostic factors, such as lymph node involvement.
Synonyms:	Mammaglobin-A, Mammaglobin-1, Secretoglobin family 2A member 2, MGB1, UGB2, Prostatein peptide C3, Prostatic steroid-binding protein C3
Note:	The volume is sufficient for > 250 immunohistochemical tests (100 µl working solution per test).

Product images:

Mammaglobin in sentinel lymph nodes in metastasis of mamma carcinoma



Mammaglobin over-expression in mamma carcinoma in situ (DAB/Hematoxylin)