

Product datasheet for **AM09318PU-N**

FPRL1 (FPR2) (C-term) Mouse Monoclonal Antibody [Clone ID: B4D9B10]

Product data:

Product Type:	Primary Antibodies
Clone Name:	B4D9B10
Applications:	ELISA, WB
Recommended Dilution:	ELISA: Reactive to the C-terminal amino acid sequence (SASPPAETELQAM) on FPRL1 in Indirect ELISA. Western Blot (1/1000).
Reactivity:	Human
Host:	Mouse
Isotype:	IgG1
Clonality:	Monoclonal
Immunogen:	A short peptide corresponding to the Cterminal amino acid sequence (SASPPAETELQAM) on FPRL1
Specificity:	This monoclonal antibody reacts with the above mentioned peptide in ELISA and reacts with the 38KDa FPRL1 on Western Blot.
Formulation:	0.01M PBS, pH 7.2 without preservatives State: Purified State: Lyophilized purified IgG fraction
Reconstitution Method:	Restore with Double distilled water to adjust the final concentration to 1.0 mg/ml
Purification:	Affinity Chromatography
Conjugation:	Unconjugated
Storage:	Upon receipt, store (in aliquots) at -20°C. Avoid repeated freezing and thawing.
Stability:	Shelf life: one year from despatch.
Gene Name:	formyl peptide receptor 2
Database Link:	Entrez Gene 2358 Human P25090



[View online »](#)

Background:

FPRL1 is a low affinity receptor to N-formyl-methionyl peptides, which are powerful neutrophils chemotactic factors. Binding of FMLP to the receptor causes activation of neutrophils. This response is mediated via a G-protein that activates a phosphatidylinositol-calcium second messenger system. The activation of LXA4R could result in an anti-inflammatory outcome counteracting the actions of proinflammatory signals such as LTB4 (leukotriene B4). FPRL1 has been reported in phagocytes, monocytes, neutrophils, differentiated myeloid cells from bone marrow, granulocyte HL-60 cells, and synovial fibroblasts. ESTs have been isolated from blood, leukocyte, lung, and placenta libraries.

Synonyms:

N-formyl peptide receptor 2, FMLP-R-I, FPRH1, RFP, LXA4R

Protein Families:

Druggable Genome, GPCR, Transmembrane

Protein Pathways:

Neuroactive ligand-receptor interaction

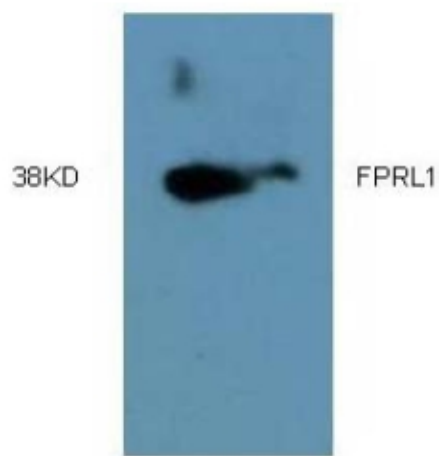
Product images:

Figure 1. Western blot analysis of extracts from HL60 cells using anti-FPRL1 antibody (clone B4D9B10) at 1 ug/ml.