

Product datasheet for **AM09317PU-N**

FPRL1 (FPR2) (C-term) Mouse Monoclonal Antibody [Clone ID: C4F9]

Product data:

Product Type:	Primary Antibodies
Clone Name:	C4F9
Applications:	ELISA, WB
Recommended Dilution:	ELISA: Reactive to the C-terminal amino acid sequence (SASPPAETELQAM) on FPRL1 in indirect ELISA. Western Blot (1/1000).
Reactivity:	Human
Host:	Mouse
Isotype:	IgG1
Clonality:	Monoclonal
Immunogen:	A short peptide corresponding to the C-terminal amino acid sequence (SASPPAETELQAM) on FPRL1
Specificity:	This monoclonal antibody reacts with the above mentioned peptide in ELISA and reacts with the 38KDa FPRL1 on Western Blot.
Formulation:	0.01M PBS, pH 7.2 without preservatives State: Purified State: Lyophilized purified IgG fraction
Reconstitution Method:	Restore with Double distilled water to adjust the final concentration to 1.0 mg/ml
Purification:	Affinity Chromatography
Conjugation:	Unconjugated
Storage:	Upon receipt, store (in aliquots) at -20°C. Avoid repeated freezing and thawing.
Stability:	Shelf life: one year from despatch.
Gene Name:	formyl peptide receptor 2
Database Link:	Entrez Gene 2358 Human P25090



[View online »](#)

Background:

Human formyl peptide receptor-like 1 (FPRL1) is a G-protein coupled seven transmembrane receptor. The receptor can bind to the formyl peptides derived from the degradation of the cell wall of infected bacteria and host cells. FPRL1 expressed on the cell surface of neutrophils and other leukocytes mediates the chemotaxis of these cells toward infected site. It has been reported that acute phase protein SAA is also a ligand of FPRL1 and SAA can induce the secretion of IL-8 and TNF- α by neutrophil through FPRL1 signalling. FPRL1 has also been shown to mediate the chemotaxis of microglia by Abeta42 peptide and the internalization of Abeta42 peptide into cytoplasm of macrophage, indicating that FPRL1 may participate in the Abeta42 peptide elicited pathogenesis in Alzheimer's disease.

Synonyms:

N-formyl peptide receptor 2, FMLP-R-I, FPRH1, RFP, LXA4R

Protein Families:

Druggable Genome, GPCR, Transmembrane

Protein Pathways:

Neuroactive ligand-receptor interaction

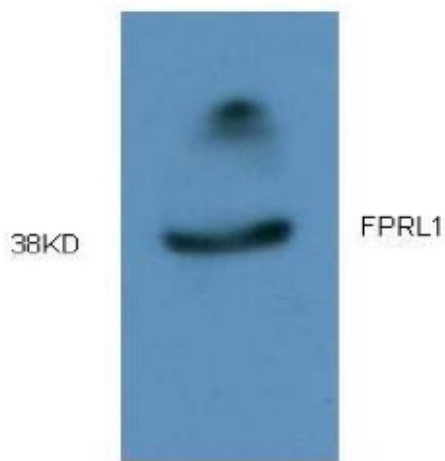
Product images:

Figure 1. Western blot analysis of extracts from HL60 cells using anti-FPRL1 antibody (clone C4F9) at 1 ug/ml.