

## Product datasheet for **AM09265PU-N**

### beta 2 Microglobulin (B2M) Mouse Monoclonal Antibody [Clone ID: D3A2]

#### Product data:

Product Type:	Primary Antibodies
Clone Name:	D3A2
Applications:	ELISA, FC, IF, WB
Recommended Dilution:	<b>ELISA:</b> 1 µg/ml coated antigen can be detected by ≥ 1ng/ml of antibody. The antibody can detect Human B2MG in Sandwich ELISA in combination with capture antibody, anti-B2MG mAb D2E9. <b>Western Blot:</b> 1 µg/ml. <b>Immunofluorescence:</b> 1/50 (20 µg/ml). <b>Fluorescence Flow Cytometry.</b>
Reactivity:	Human
Host:	Mouse
Isotype:	IgG1
Clonality:	Monoclonal
Immunogen:	Highly purified recombinant Beta-2-Microglobulin from Human Urine.
Specificity:	This monoclonal antibody reacts with natural and recombinant Human Beta-2 MG.
Formulation:	0.01M PBS, pH 7.2 without preservatives. State: Aff - Purified State: Lyophilized purified IgG fraction.
Reconstitution Method:	Restore with Double distilled water to a final concentration to 1.0 mg/ml.
Purification:	Affinity Chromatography on Protein G.
Conjugation:	Unconjugated
Storage:	Store lyophilized at 2-8°C for 6 months or at -20°C long term. After reconstitution store the antibody undiluted at 2-8°C for one month or (in aliquots) at -20°C long term. Avoid repeated freezing and thawing.
Stability:	Shelf life: one year from despatch.
Gene Name:	beta-2-microglobulin



[View online »](#)

**Database Link:** [Entrez Gene 567 Human P61769](#)

**Background:** Human beta 2 microglobulin (B2MG) is a component of major histocompatibility complex 1 (MHC1). It is abundant at the surface of lymphocytes and exists at the surface of all cell types except red cells and platelets. B2MG is normally filtered out of blood through glomeruli, but the process is impaired in patients with renal diseases. Elevated B2MG level is implicated with lymphoma, multiple myeloma, renal diseases, viral infections and auto-immune conditions.

**Synonyms:** B2M, Beta-2 microglobulin, Beta 2 microglobulin

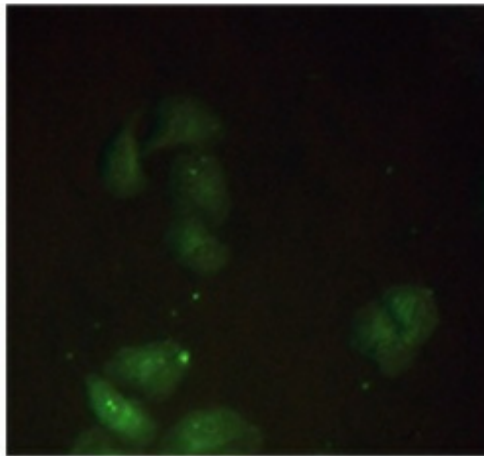
**Protein Families:** Druggable Genome, Secreted Protein

**Protein Pathways:** Antigen processing and presentation

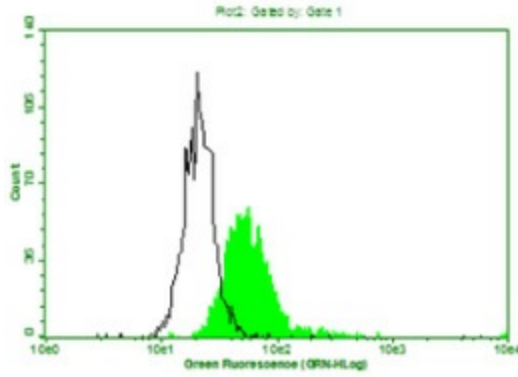
### Product images:



Detect recombinant human B2MG antigen (100ng/lane) using anti-human B2MG mAb D3A2 at 1 ug/ml.



Staining of methanol-fixed HeLa cells by Immunocytochemistry: Mouse anti-Human beta 2 Microglobulin monoclonal antibody (D3A2) 1:50 (20 ug/ml).



Above is the histogram of HeLa cells stained with anti-Human B2MG mAb D3A2 and fluorescence labelled secondary antibody. Black line represents histogram of HeLa cells stained with isotype control, anti-TB 38Kd antigen mAb B12F8.