

Product datasheet for **AM09264PU-N**

beta 2 Microglobulin (B2M) Mouse Monoclonal Antibody [Clone ID: D2A10]

Product data:

Product Type:	Primary Antibodies
Clone Name:	D2A10
Applications:	ELISA, FC, IF, WB
Recommended Dilution:	ELISA: 1 µg/ml coated antigen can be detected by ≥ 1ng/ml of antibody. Western Blot: 1 µg/ml. Immunofluorescence: 1/50 (20 µg/ml). Fluorescence Flow Cytometry: 1/100 (10 µg/ml).
Reactivity:	Human
Host:	Mouse
Isotype:	IgG1
Clonality:	Monoclonal
Immunogen:	Highly purified recombinant Beta-2-Microglobulin from Human urine.
Specificity:	This monoclonal antibody reacts with natural and recombinant Human Beta-2 MG.
Formulation:	0.01M PBS, pH 7.2 without preservatives State: Aff - Purified State: Lyophilized purified IgG fraction
Reconstitution Method:	Restore with Double distilled water to a final concentration to 1.0 mg/ml.
Purification:	Affinity Chromatography on Protein G
Conjugation:	Unconjugated
Storage:	Store lyophilized at 2-8°C for 6 months or at -20°C long term. After reconstitution store the antibody undiluted at 2-8°C for one month or (in aliquots) at -20°C long term. Avoid repeated freezing and thawing.
Stability:	Shelf life: one year from despatch.
Gene Name:	beta-2-microglobulin
Database Link:	Entrez Gene 567 Human P61769



[View online »](#)

Background:

Human beta 2 microglobulin (B2MG) is a component of major histocompatibility complex 1 (MHC1). It is abundant at the surface of lymphocytes and exists at the surface of all cell types except red cells and platelets. B2MG is normally filtered out of blood through glomeruli, but the process is impaired in patients with renal diseases. Elevated B2MG level is implicated with lymphoma, multiple myeloma, renal diseases, viral infections and auto-immune conditions.

Synonyms:

B2M, Beta-2 microglobulin, Beta 2 microglobulin

Protein Families:

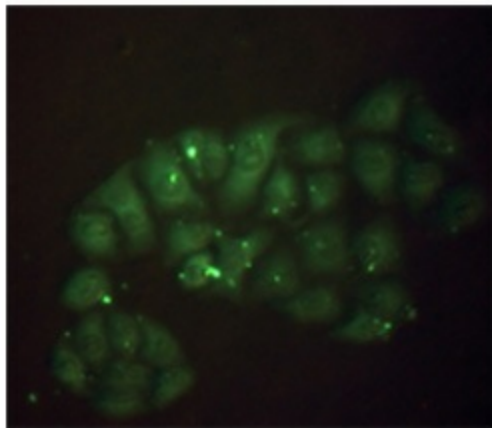
Druggable Genome, Secreted Protein

Protein Pathways:

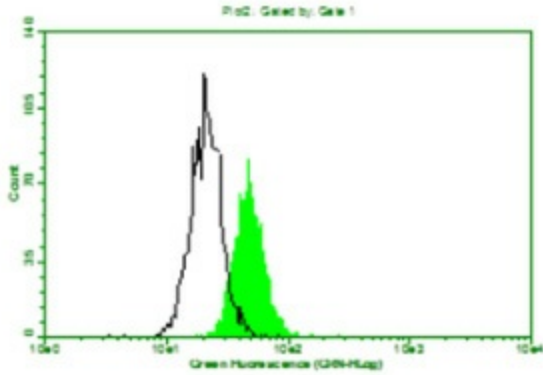
Antigen processing and presentation

Product images:

Detect recombinant human B2MG antigen (100ng/lane) using anti-human B2MG mAb D2A10 at 1 ug/ml dilution.



Staining of methanol-fixed HeLa cells: Mouse anti-Human beta 2 Microglobulin monoclonal antibody (D2A10) 1/50 (20 ug/ml).



Above is the histogram of Mouse anti-Human beta 2 Micro Globulin monoclonal antibody (D2A10) 1:100 (10ug/mL) staining of Hela cells. Black line histogram represents the isotype control, Mouse anti-TB 38Kd antigen monoclonal antibody (Clone B12F8).