

## Product datasheet for **AM09262PU-N**

### Albumin (ALB) Mouse Monoclonal Antibody [Clone ID: S4D6]

#### Product data:

|                        |  |
|------------------------|--|
| Product Type:          | Primary Antibodies   |
| Clone Name:            | S4D6   |
| Applications:          | WB   |
| Recommended Dilution:  | <b>Western Blot.</b>   |
| Reactivity:            | Human  |
| Host:                  | Mouse  |
| Isotype:               | IgG1   |
| Clonality:             | Monoclonal   |
| Immunogen:             | Human Serum Albumin.   |
| Specificity:           | Human Serum Albumin.   |
| Formulation:           | 0.01M PBS, pH 7.2 without preservatives<br>State: Aff - Purified<br>State: Lyophilized purified IgG fraction   |
| Reconstitution Method: | Restore with Double distilled water to adjust the final concentration to 1.0 mg/ml.  |
| Purification:          | Affinity Chromatography on Protein G   |
| Conjugation:           | Unconjugated   |
| Storage:               | Store lyophilized at 2-8°C for 6 months or at -20°C long term.<br>After reconstitution store the antibody undiluted at 2-8°C for one month<br>or (in aliquots) at -20°C long term.<br>Avoid repeated freezing and thawing. |
| Stability:             | Shelf life: one year from despatch.  |
| Gene Name:             | albumin  |
| Database Link:         | <a href="#">Entrez Gene 213 Human P02768</a>   |



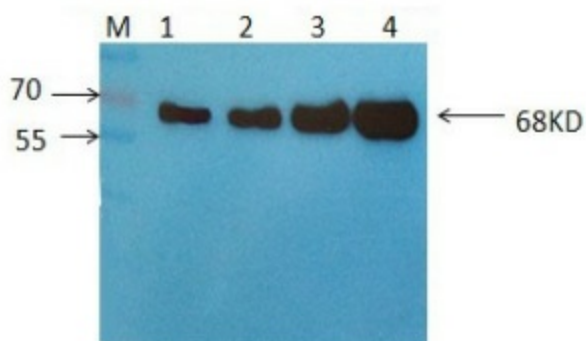
[View online »](#)

**Background:** Human serum albumin is the most abundant protein in human serum. It is produced in liver cells as preproalbumin and released to blood to become albumin after cleavage of the N-terminal peptide. The protein is a monomeric, soluble protein with a molecular mass of 67kDa. Human albumin has important functions in transporting human hormones, fatty acids and other compounds, and maintaining PH balance and osmotic pressure in blood.

**Synonyms:** ALB, BSA, HSA, Serum Albumin

**Protein Families:** Secreted Protein

**Product images:**



Western Blot: Detection of 68KDa Albumin in Human Serum using Mouse anti-Human Albumin antibody S4D6 at 2 ug/ml. M: Molecular Weight Marker. Lane 1: 2  $\mu$ l of Serum. Lane 2: 3  $\mu$ l of Serum. Lane 3: 5  $\mu$ l of Serum. Lane 4: 8  $\mu$ l of Serum.